



**Barcelona  
Supercomputing  
Center**  
Centro Nacional de Supercomputación



EXCELENCIA  
SEVERO  
OCHOA

# Dust prediction models

*Sara Basart ([sara.basart@bsc.es](mailto:sara.basart@bsc.es))*

*Training Workshop on Sand and Dust Storms in  
West Asia, La Laguna, Tenerife, Spain, 21 May 2018*

**Questions will be welcome!**



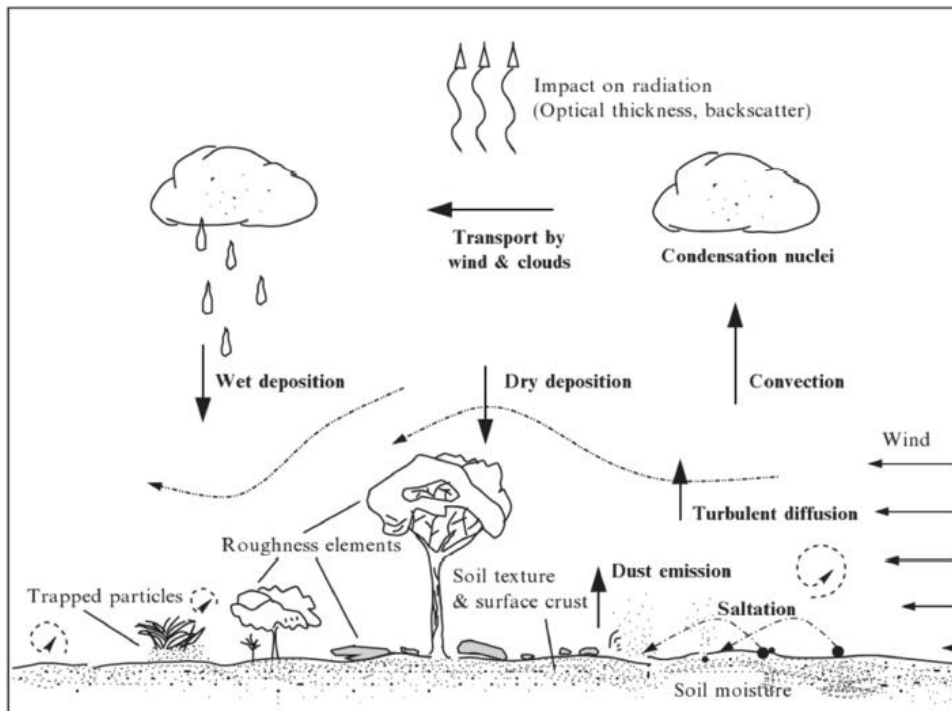
# Introduction

## What do we need to forecast dust storms?

1. Satellites, surface observations, NWP models and dust models.
2. Good knowledge of the dust climatology in the region.
3. Good knowledge of observation limitations.
4. Good knowledge of the dust model limitations.

# Dust forecasting models

**Dust models** are a mathematical representation of atmospheric dust cycle.



Extracted from Shao (2008)

- ✓ To complement dust-related observations, filling the temporal and spatial gaps of the measurements.
- ✓ To help us to understand the dust processes and their interaction with climate and ecosystems.
- ✓ To predict the impact of dust on surface level concentrations used as **SHORT-TERM FORECASTING TOOLS** (3-5 days ahead)



# Dust forecasting models

Dust forecasting models do **not** take account dust **resuspension**



*Kathmandu, Nepal, March 2017*

# Outlook

## 1. Dust cycle and associated processes

- *The atmospheric dust cycle*
- *Dust global climatology*
- *Types of dust storms and model forecasting skills*

## 2. Dust forecasting models

- *Dust emission schemes and dust sources*
- *Dust transport*
- *Dust deposition and sedimentation*

## 3. Modeling the dust cycle at BSC: From R&D to operational

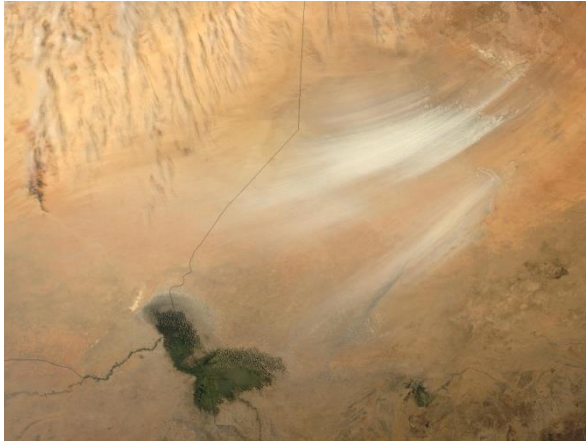
# Dust cycle and associated processes



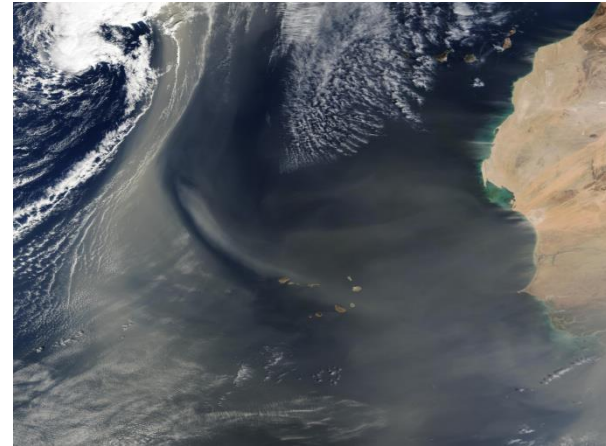
**Barcelona  
Supercomputing  
Center**

Centro Nacional de Supercomputación

# Dust cycle and associated processes



MODIS true colour composite image for March 2005 depicting a dust storm initiated at the Bodélé Depression (Chad Basin)

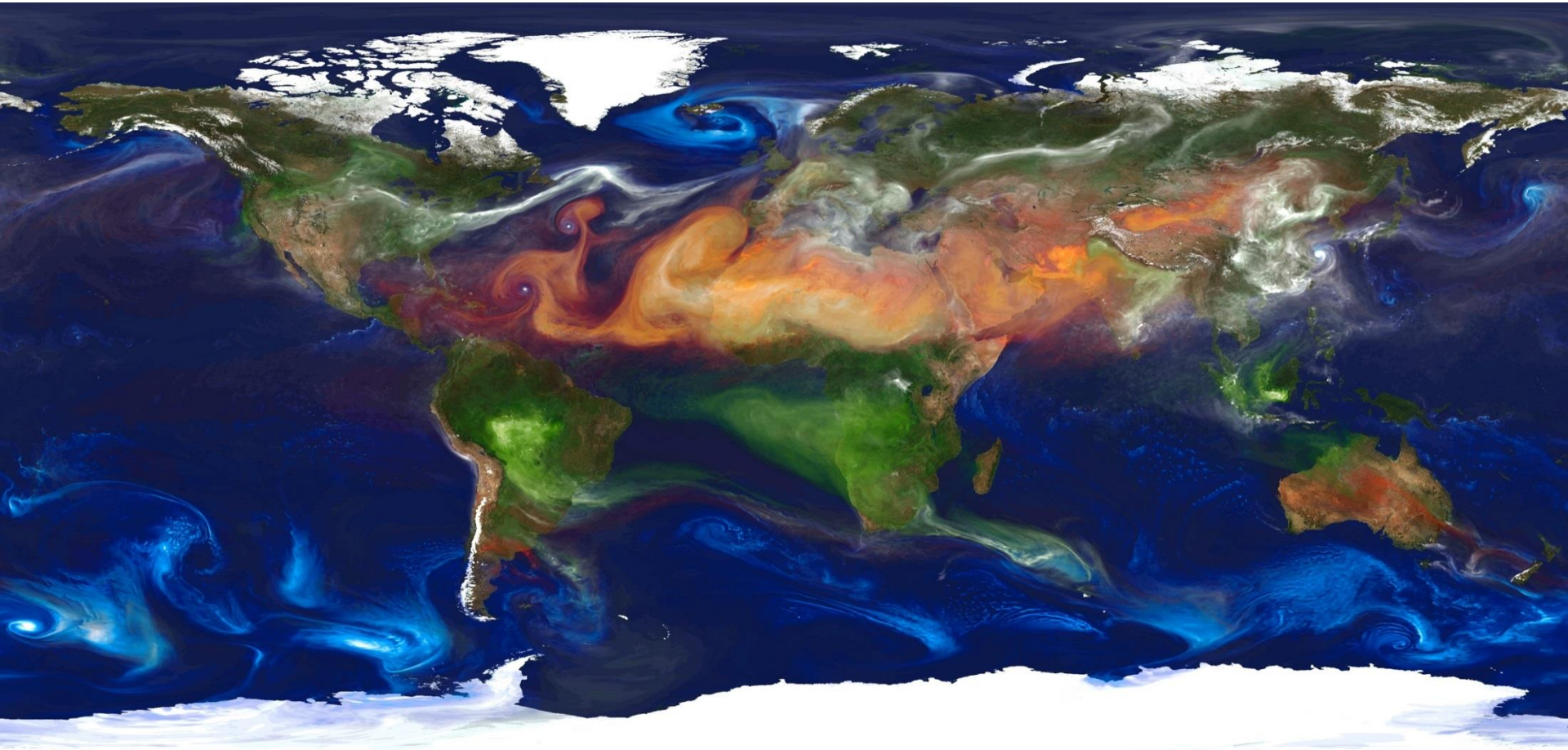


MODIS True color Western Africa – Atlantic Ocean

Dust transport is a global phenomenon. However, dust emission is a threshold phenomenon, sporadic and spatially heterogeneous, that is locally controlled on small spatial and temporal scales.



# Dust cycle and associated processes



Organic Carbon + Elemental carbon

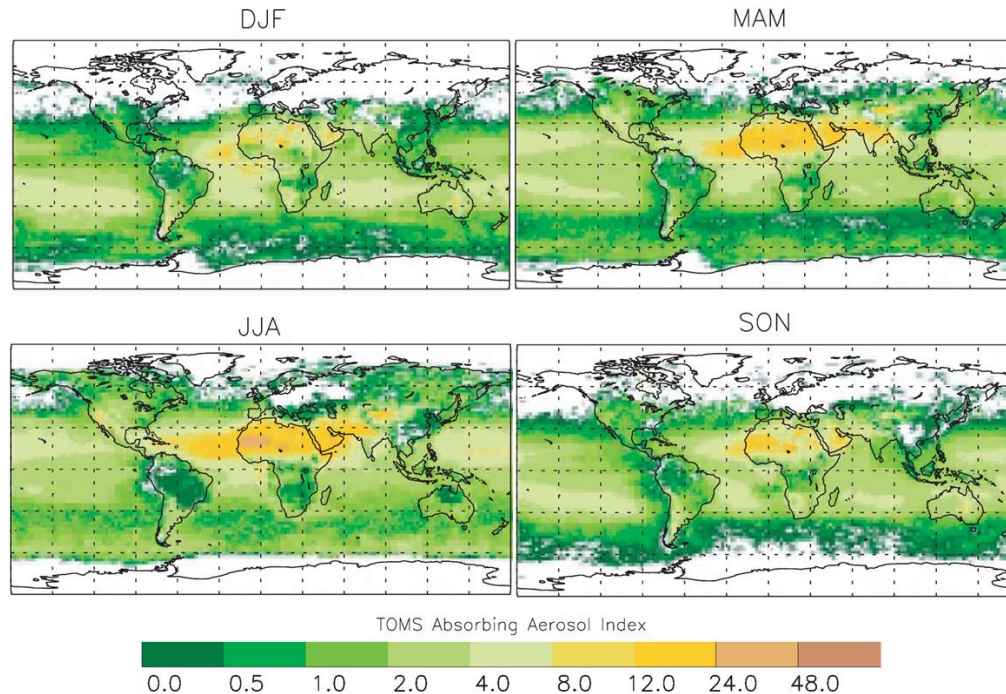
Dust

Sulfate

Sea salt

# Dust cycle and associated processes

Temporal changes in the dust distribution: SEASONAL and DECADAL CHANGES

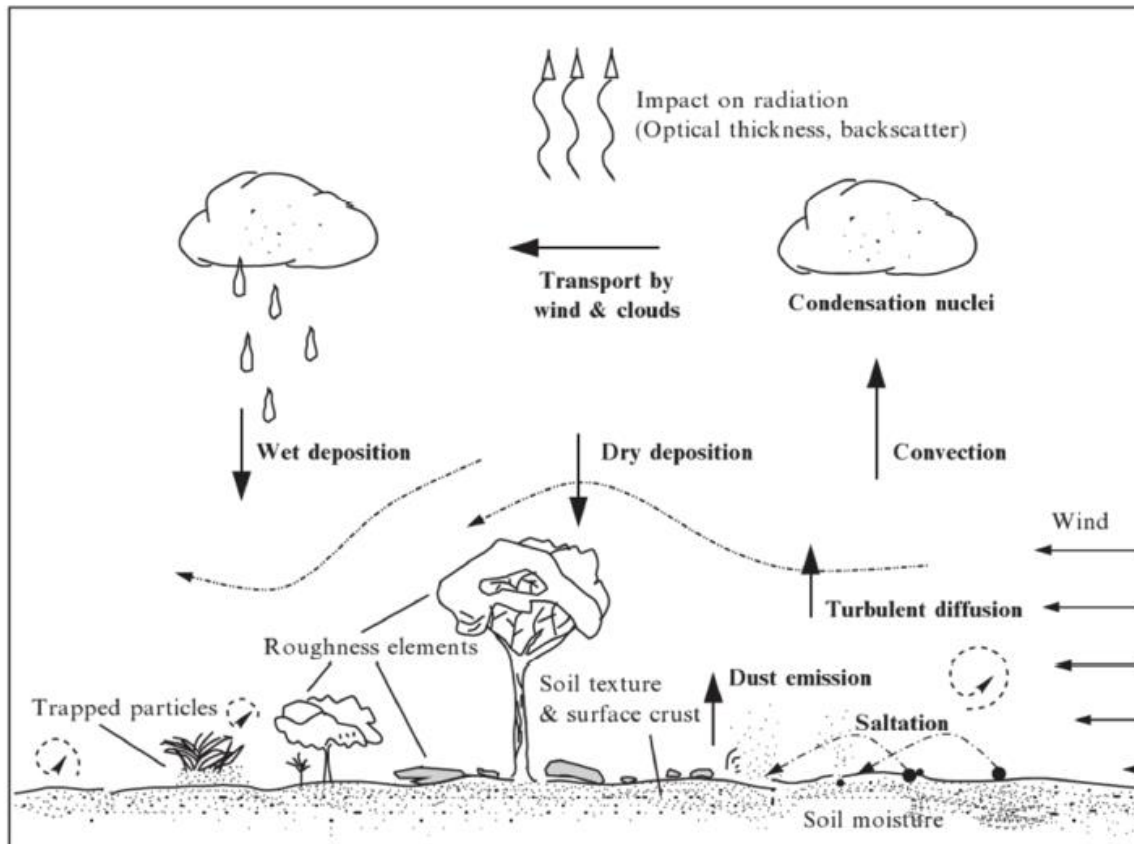


- Seasonal dust distribution changes well characterized. Follows seasonal changing weather regimes (mainly) and vegetation changes (in semi-arid areas)
- Interannual/decadal changes are controlled by climate and surface modification (land use, desertification). Decadal changes are not well captured by models



# Dust cycle and associated processes

The atmospheric dust cycle and involves a variety of processes:



- Dust emission from dry unvegetable surfaces (dust sources)
- Mid- and long-range transport
- Sedimentation, wet and dry deposition

*Extracted from Shao (2008)*

# Dust cycle and associated processes

## Dust Impacts

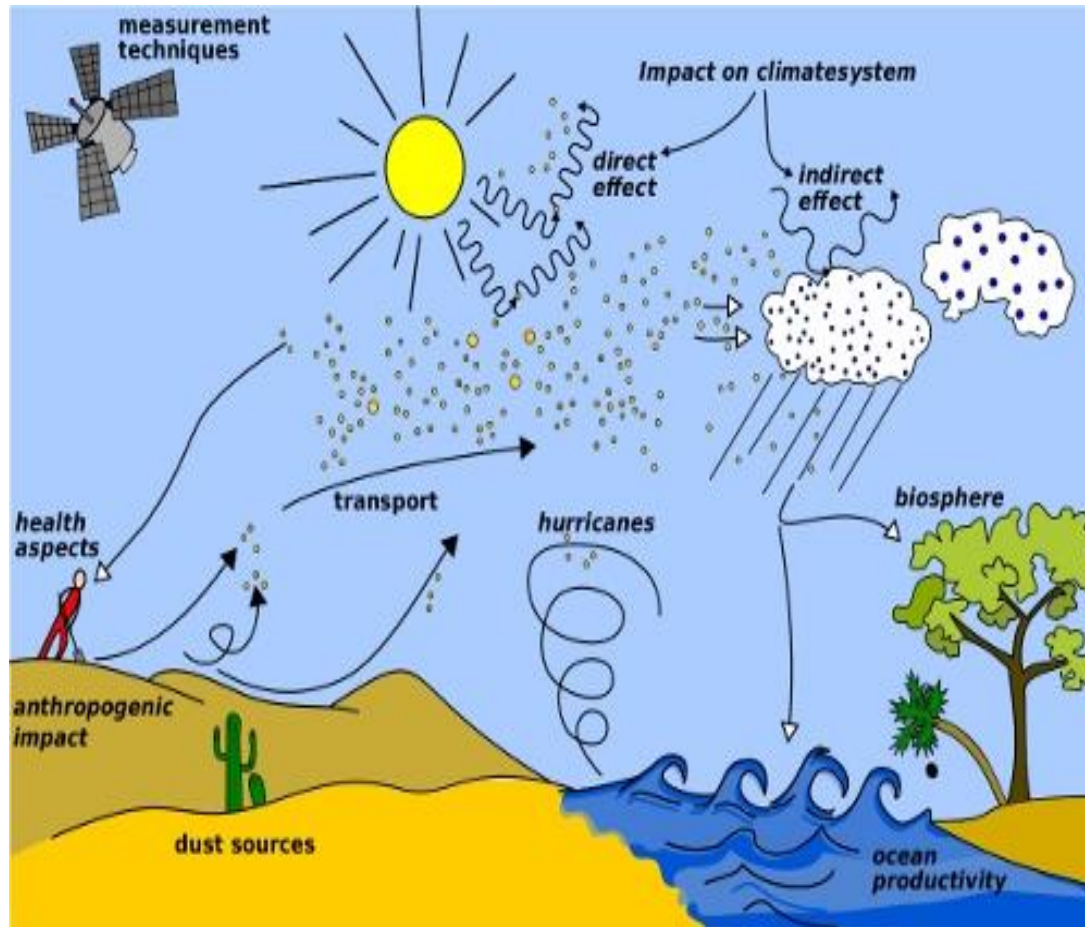


Image from WMO website  
(<http://www.wmo.int/pages/prog/arep/wwrp/new/hurricanes.html>)

### Ecosystems, meteorology and climate

- *Marine productivity*
- *Coral mortality*
- *Hurricanes formation*

### Air Quality and Human Health

- *Respiratory disease (asthma)*
- *Eye infections*
- *Meningitis in Africa*
- *Valley Fever in the Americas*

### Aviation and Ground Transportation

- *Low visibility (i.e. air disasters)*

### Agriculture and fishing

### Energy and industry

# Dust cycle and associated processes

## Types of dust storms:

### **Synoptic dust storms** (large scale weather systems)

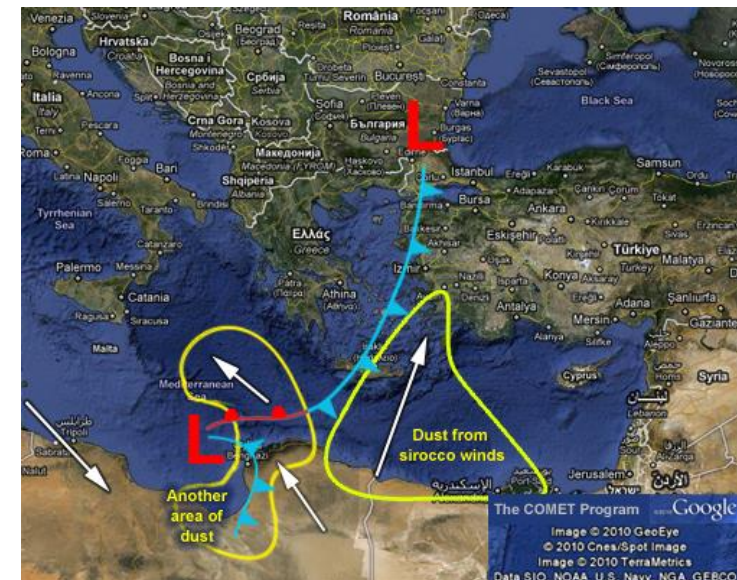
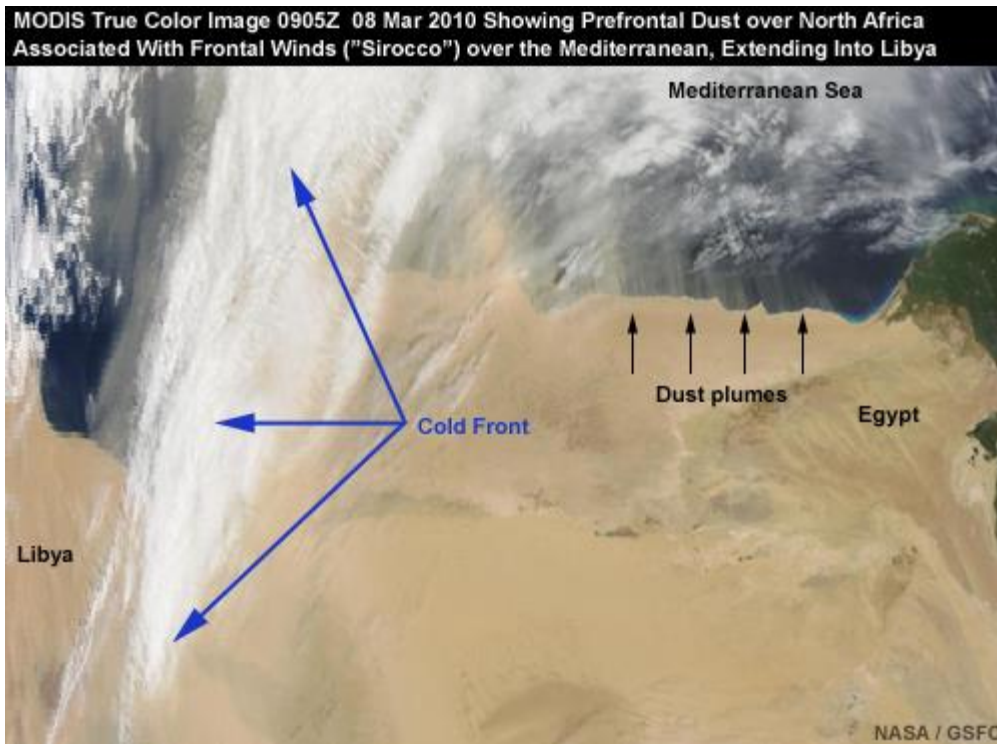
- Prefrontal winds
- Postprontal winds
- Large-scale Trade winds
- ...

### **Mesoscale dust storms**

- Downslope winds
- Gap flow
- Convection (dust devils and Haboobs)
- Inversion downburst storms
- ...

# Dust cycle and associated processes

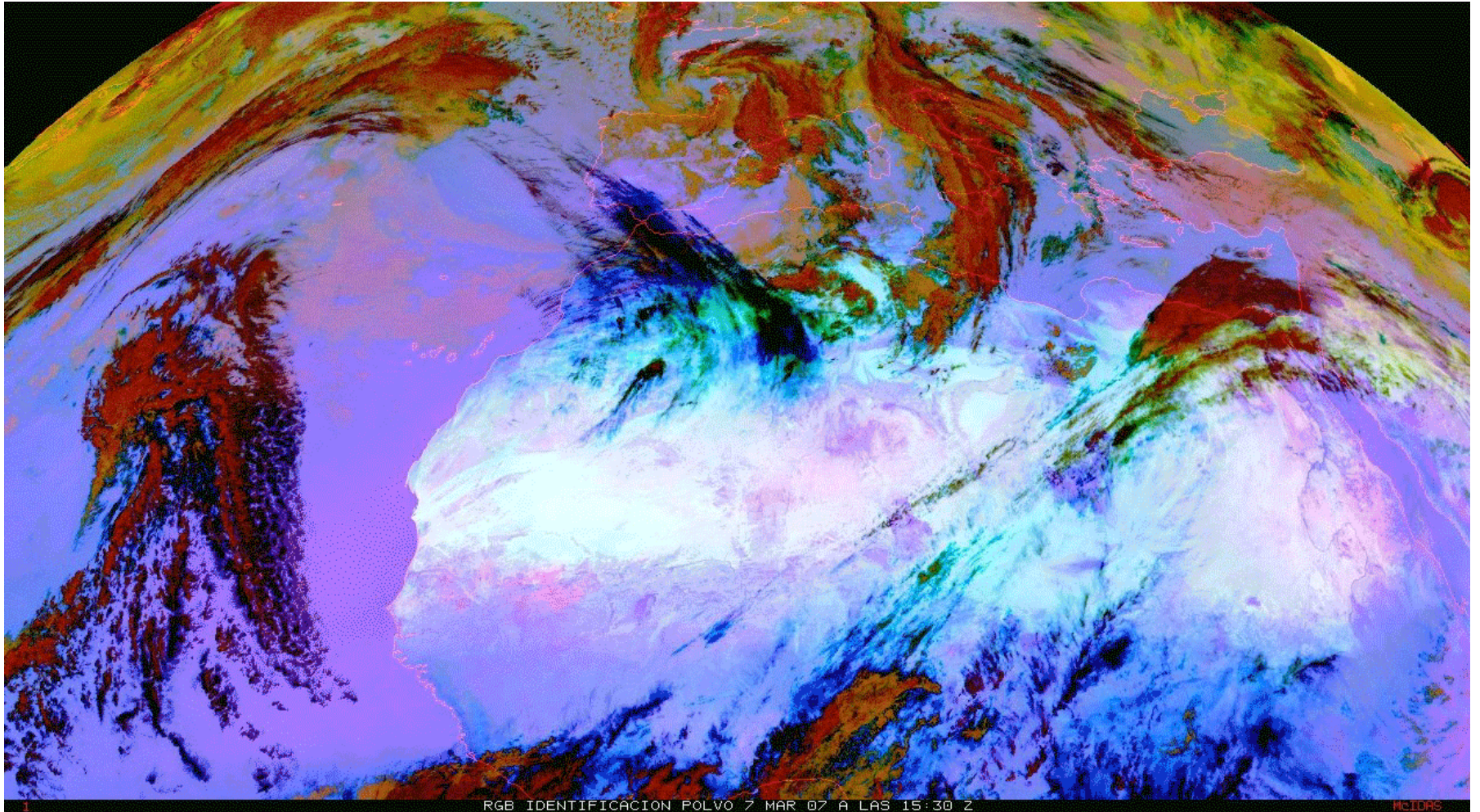
## Synoptic dust storms: Pre-frontal





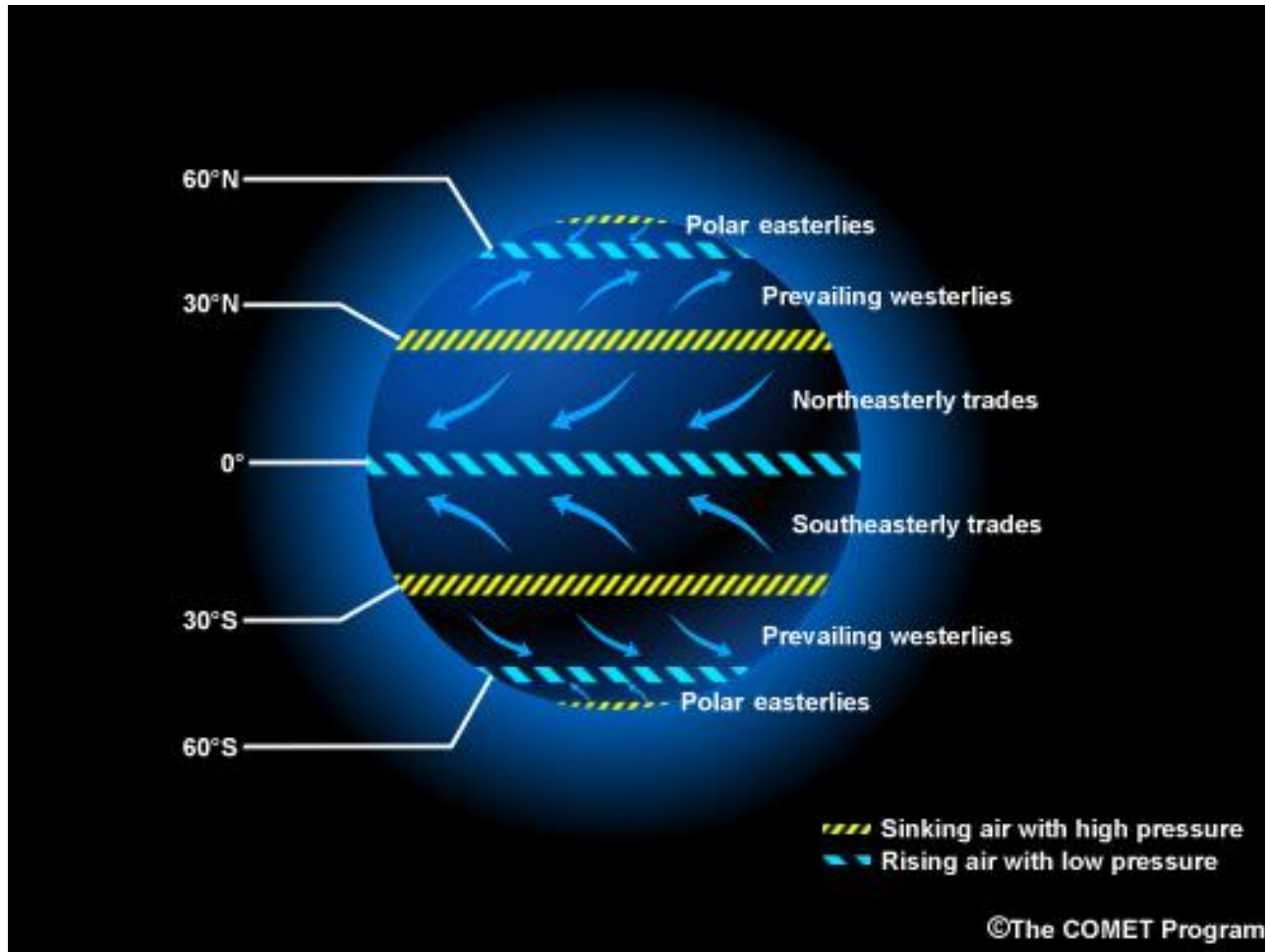
# Dust cycle and associated processes

Synoptic dust storms: Post-frontal



# Dust cycle and associated processes

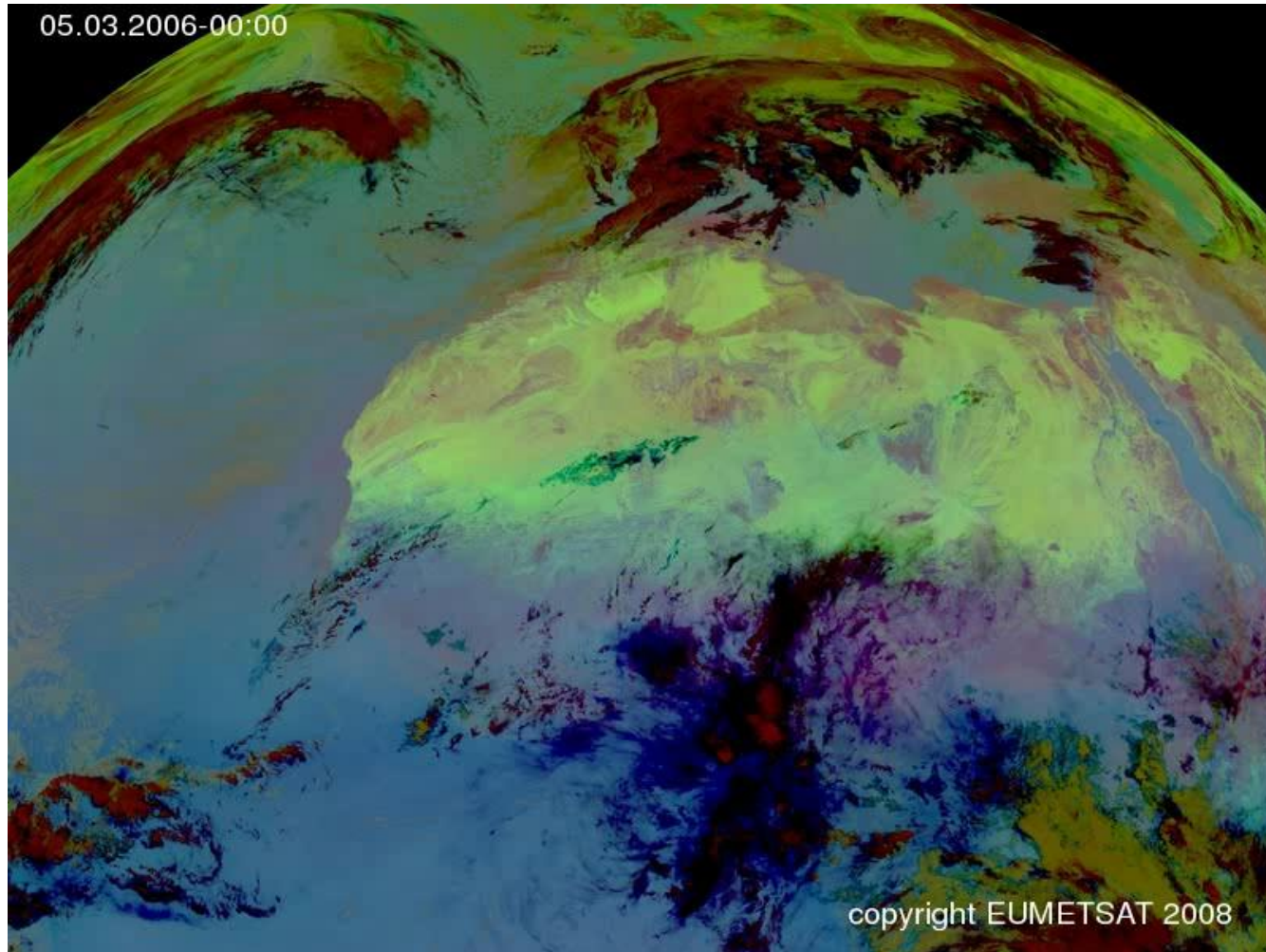
Synoptic dust storms: Large-scale trade winds





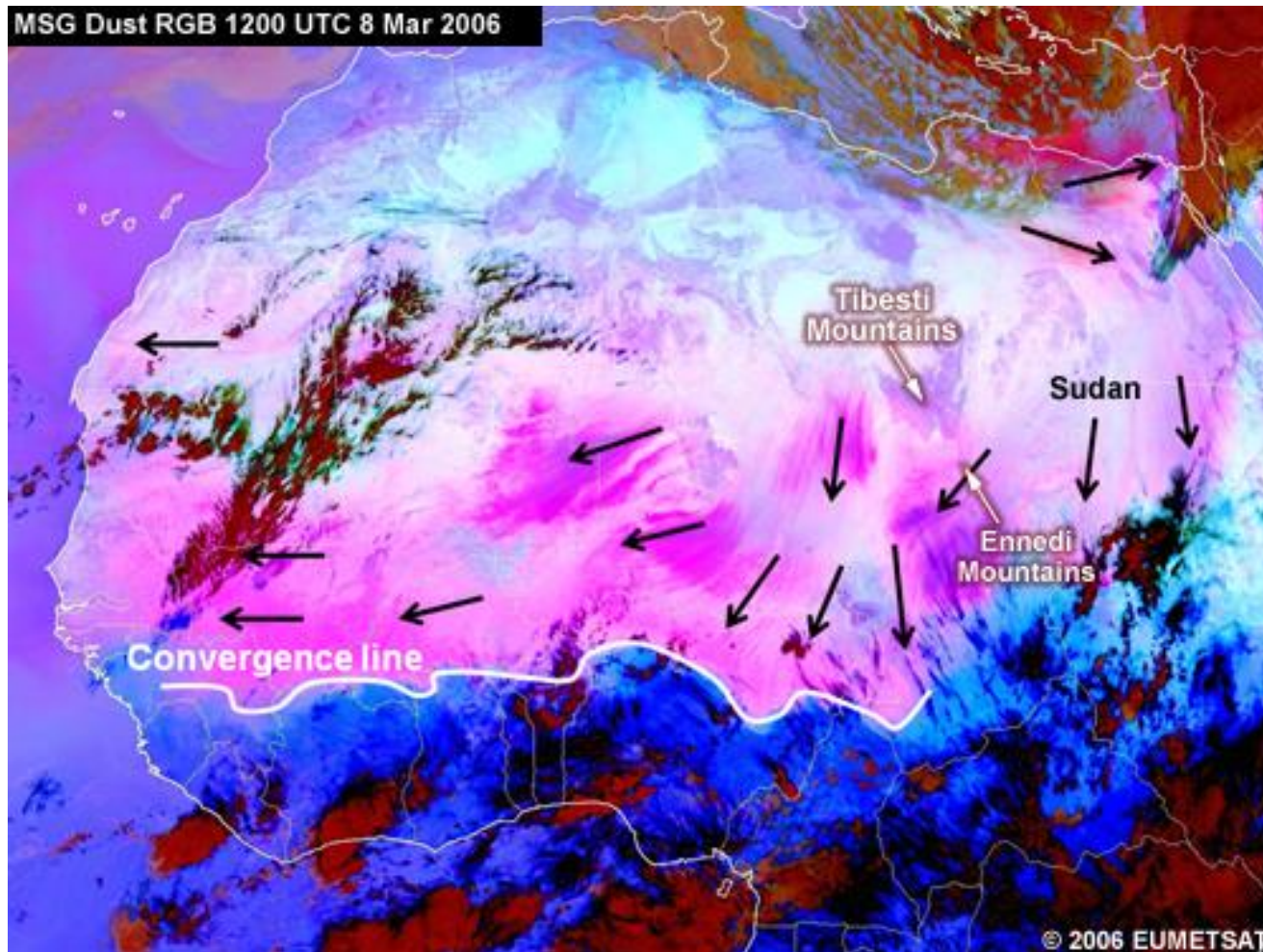
# Dust cycle and associated processes

Synoptic dust storms: Large-scale trade winds



# Dust cycle and associated processes

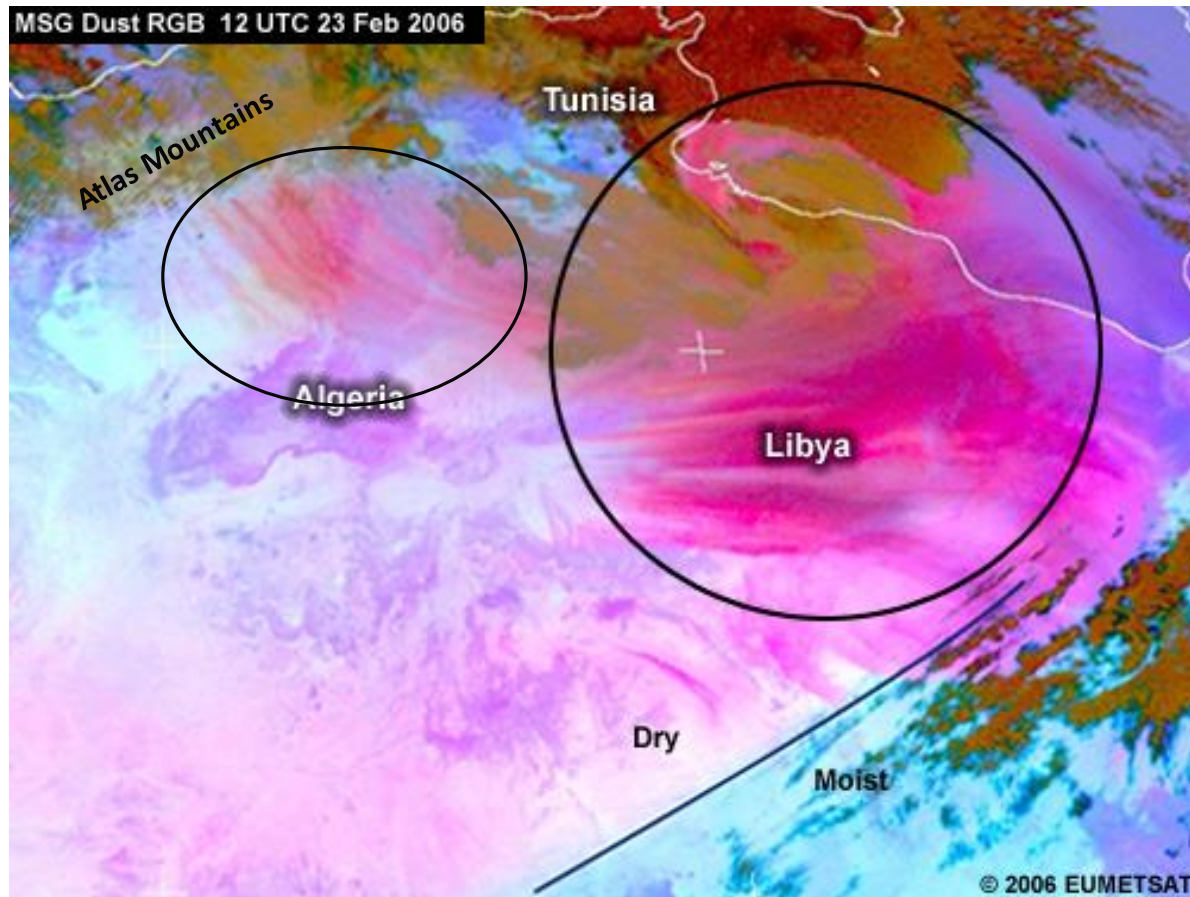
Synoptic dust storms: Large-scale trade winds





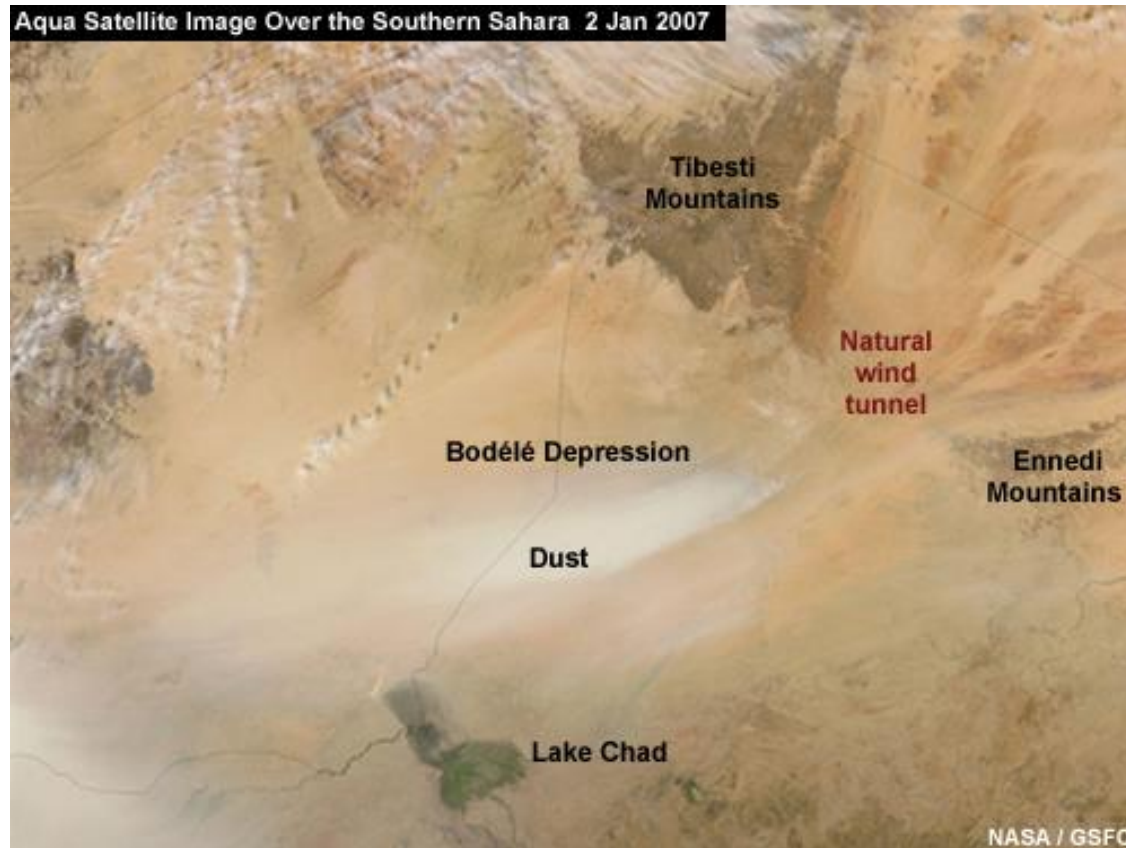
# Dust cycle and associated processes

## Mesoscale dust storms: Downslope winds



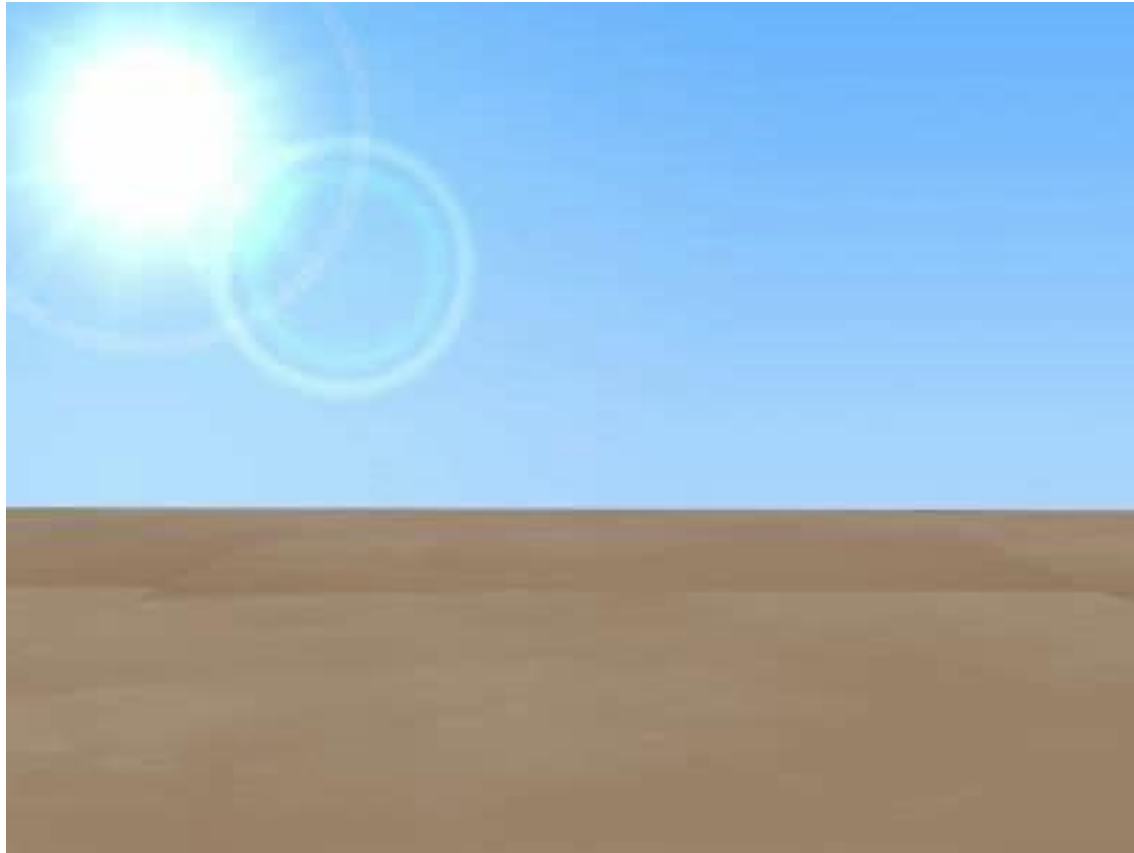
# Dust cycle and associated processes

## Mesoscale dust storms: Gap flow



# Dust cycle and associated processes

Mesoscale dust storms: Dust devils (convection)



Movie from the COMET program at <http://meted.ucar.edu/> of the University Corporation for Atmospheric Research (UCAR)

# Dust cycle and associated processes

## Mesoscale dust storms: Haboobs



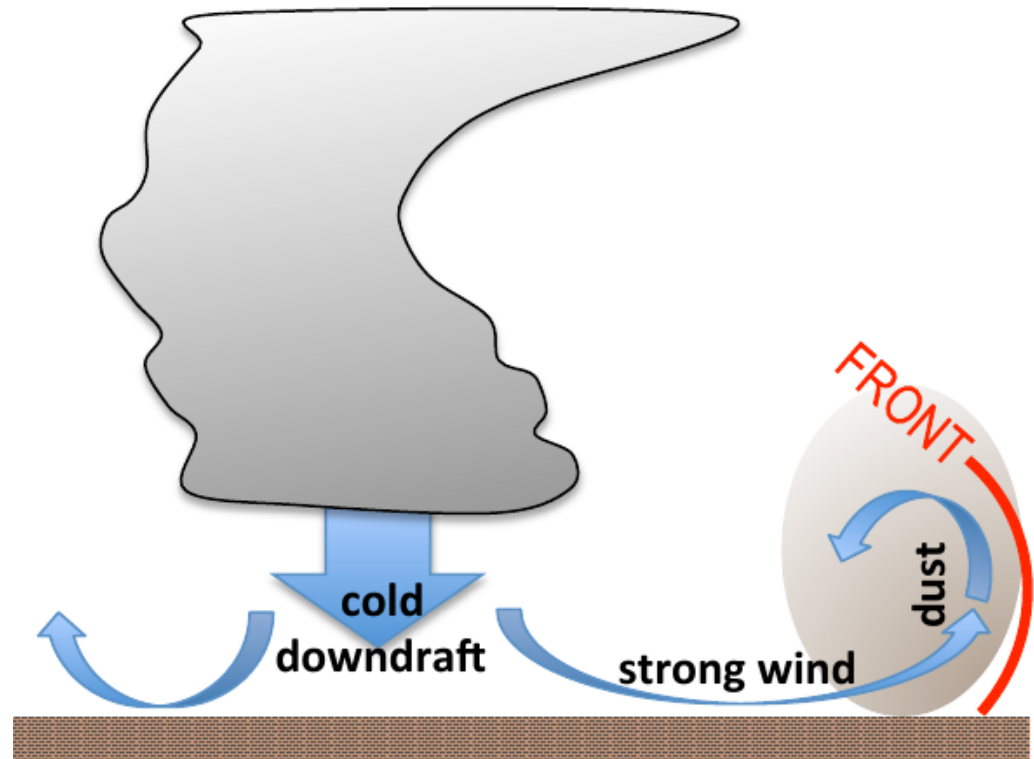
Movie from the COMET program at <http://meted.ucar.edu/> of the University Corporation for Atmospheric Research (UCAR)



# Dust cycle and associated processes

## Mesoscale dust storms: Haboobs

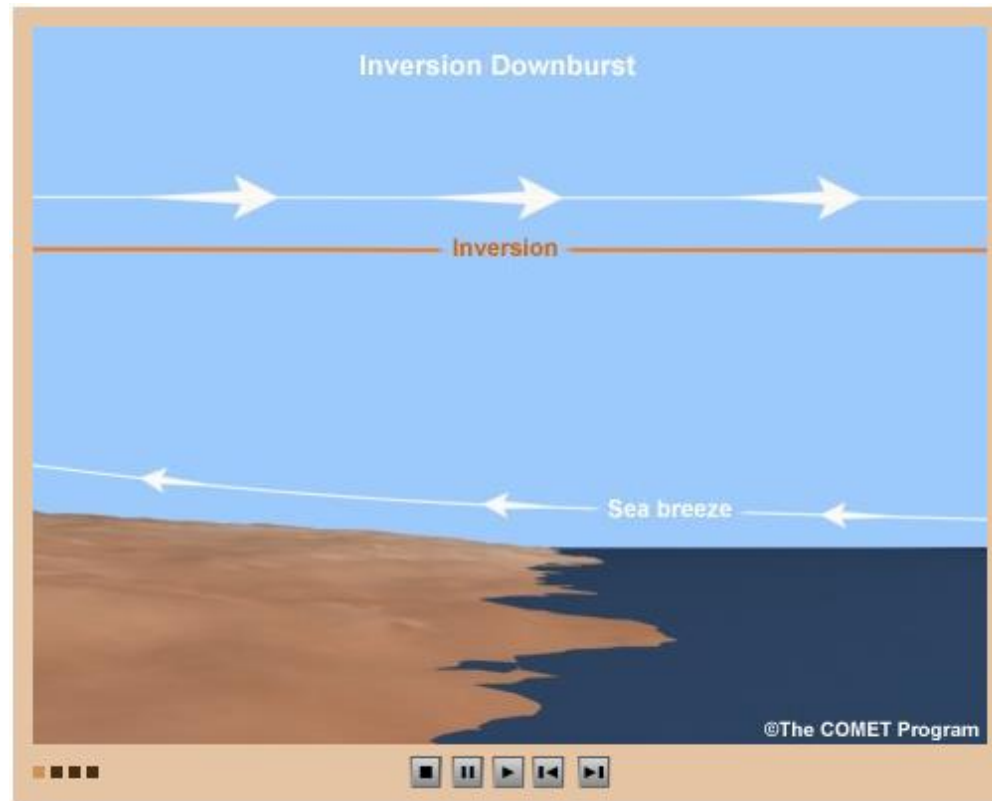
Intensive cold  
downbursts from  
convective cells  
produced high velocity  
surface wind, creating  
cold front which was  
lifting, mixing and  
pushing dust



**Expected:** high wind speed, drop in temperature, rise in humidity, rise in pressure, reduction of visibility.

# Dust cycle and associated processes

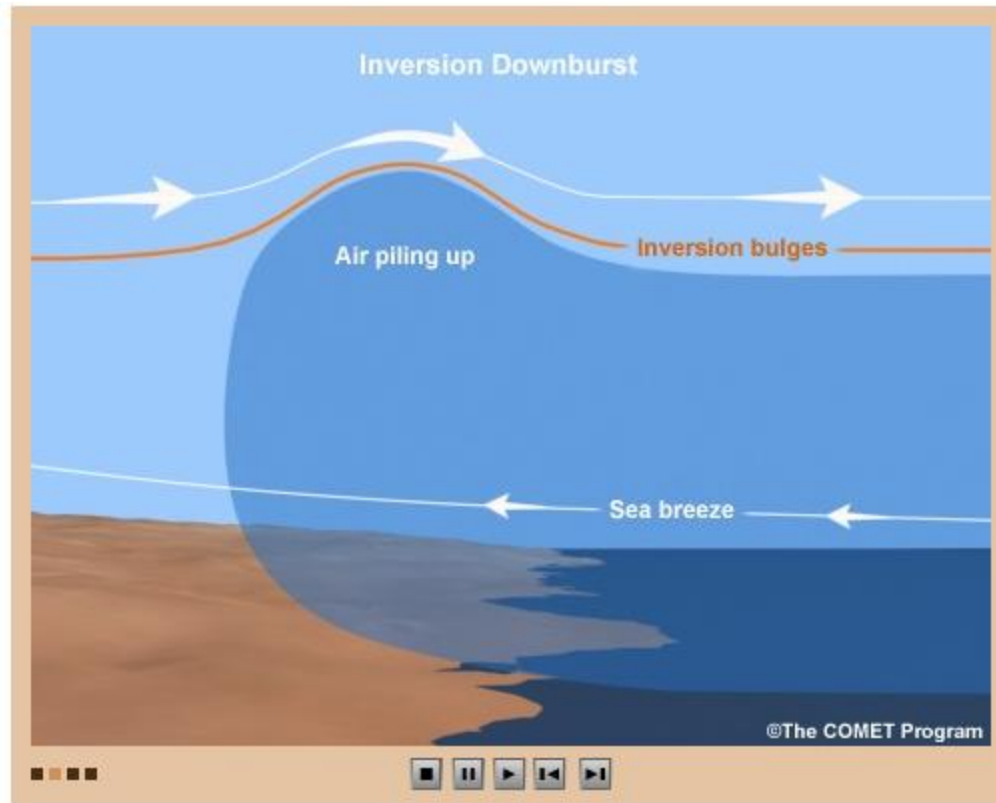
## Mesoscale dust storms: Inversion downbursts



Movie from the COMET program at <http://meted.ucar.edu/> of the University Corporation for Atmospheric Research (UCAR)

# Dust cycle and associated processes

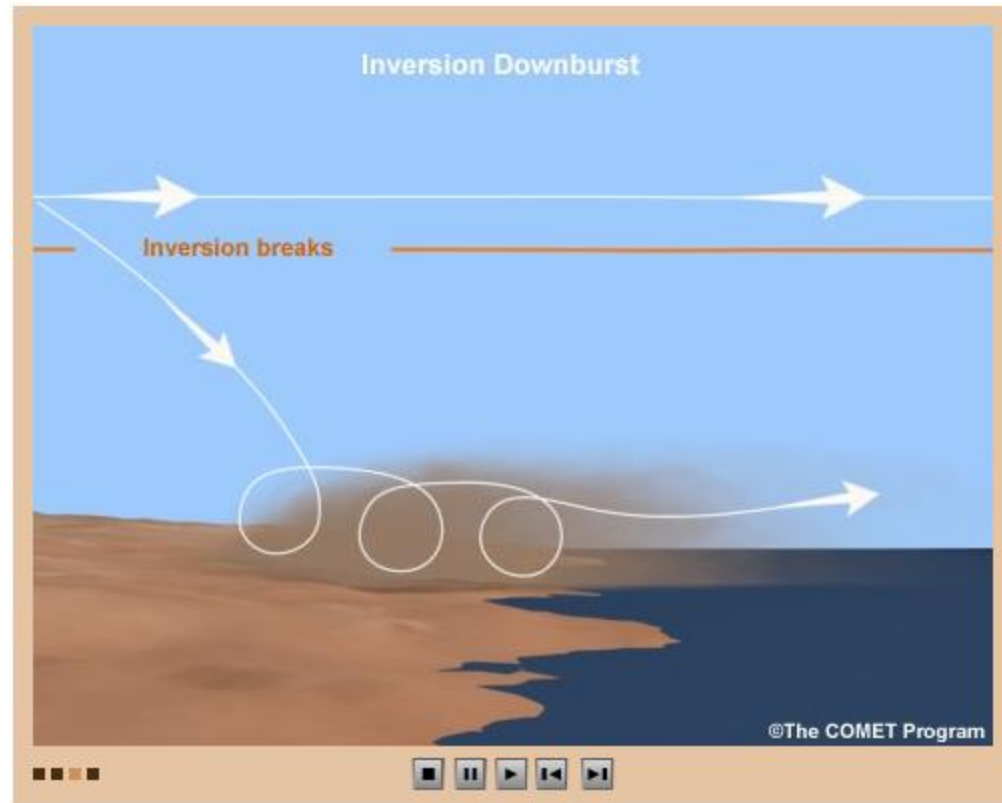
## Mesoscale dust storms: Inversion downbursts



Movie from the COMET program at <http://meted.ucar.edu/> of the University Corporation for Atmospheric Research (UCAR)

# Dust cycle and associated processes

## Mesoscale dust storms: Inversion downbursts



Movie from the COMET program at <http://meted.ucar.edu/> of the University Corporation for Atmospheric Research (UCAR)

# Dust cycle and associated processes

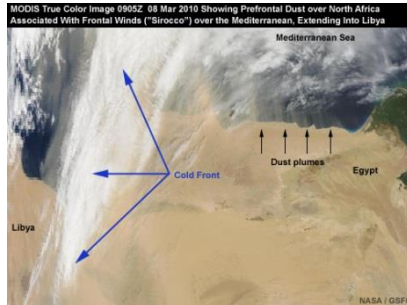
## Mesoscale dust storms: Inversion downbursts



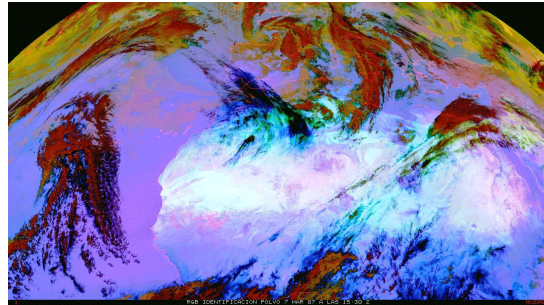
Movie from the COMET program at <http://meted.ucar.edu/> of the University Corporation for Atmospheric Research (UCAR)

# Dust cycle and associated processes

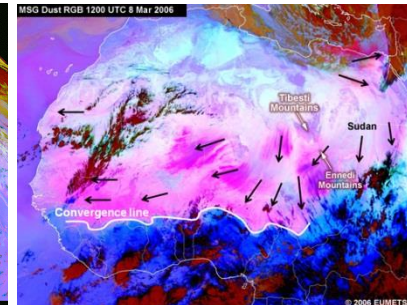
**Synoptic dust storms** (large scale weather systems) **Well captured by models.**



*Pre-frontal winds*

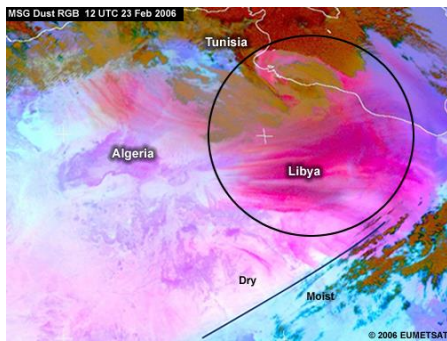


*Post-frontal winds*

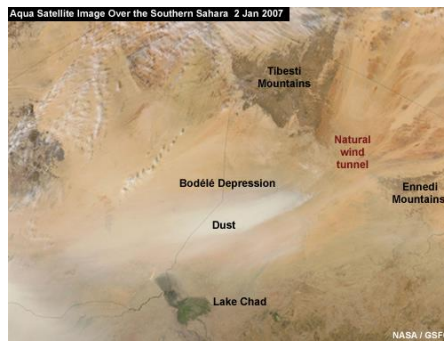


*Large-scale trade winds*

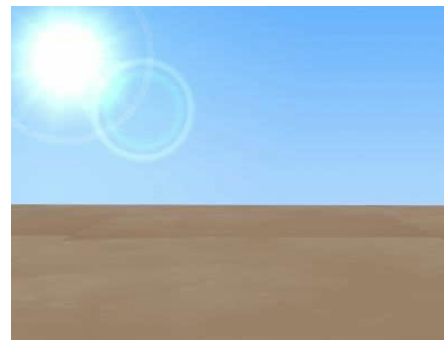
**Mesoscale dust storms** **Poorly captured by models.**  
**Some types improve in regional models.**



*Downslope winds*



*Gap flow*



*Dust devils*



*Haboobs*



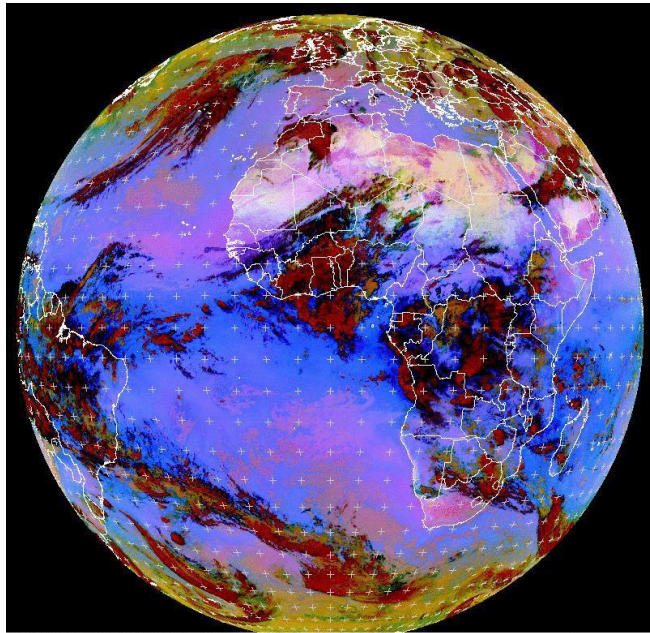
# Dust forecasting models



**Barcelona  
Supercomputing  
Center**

Centro Nacional de Supercomputación

# Dust Forecasting models



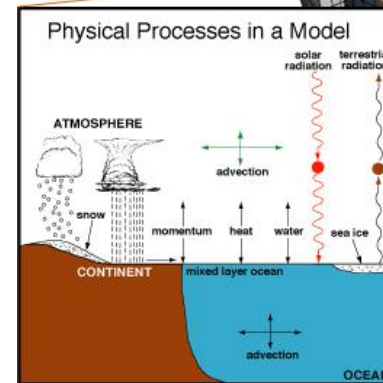
MET9 RGB-Dust 2011-04-05 00:00 UTC

EUMETSAT



Horizontal Grid  
(Latitude-Longitude)


Vertical Grid  
(Height or Pressure)



# Dust forecasting models

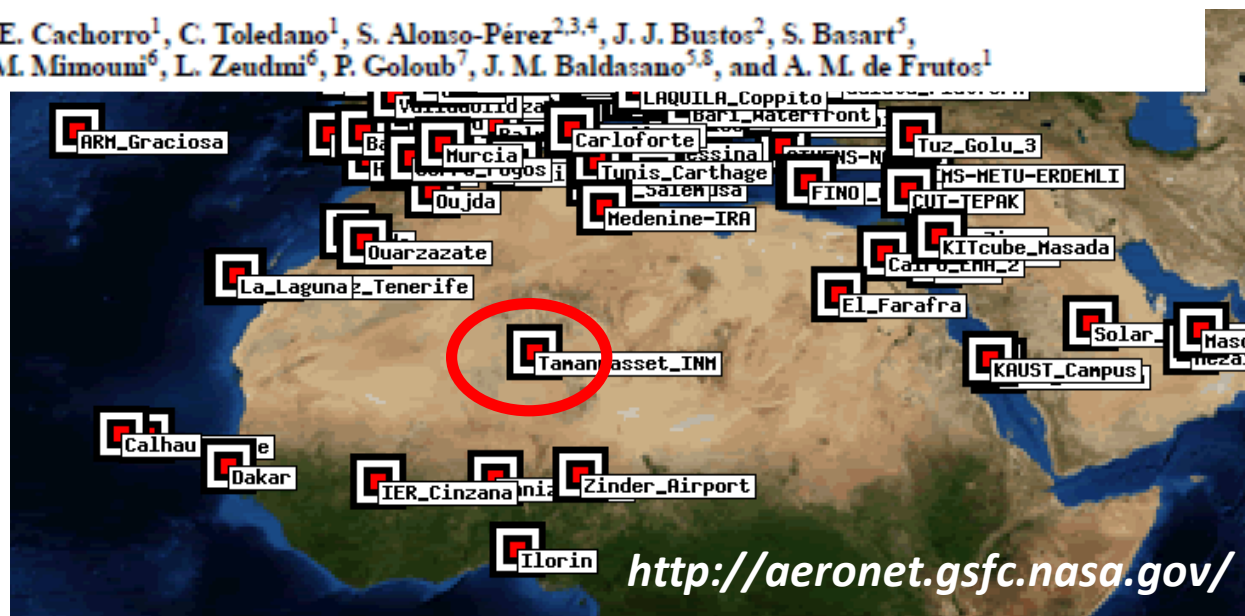
Atmos. Chem. Phys., 14, 11753–11773, 2014  
www.atmos-chem-phys.net/14/11753/2014/  
doi:10.5194/acp-14-11753-2014  
© Author(s) 2014. CC Attribution 3.0 License.



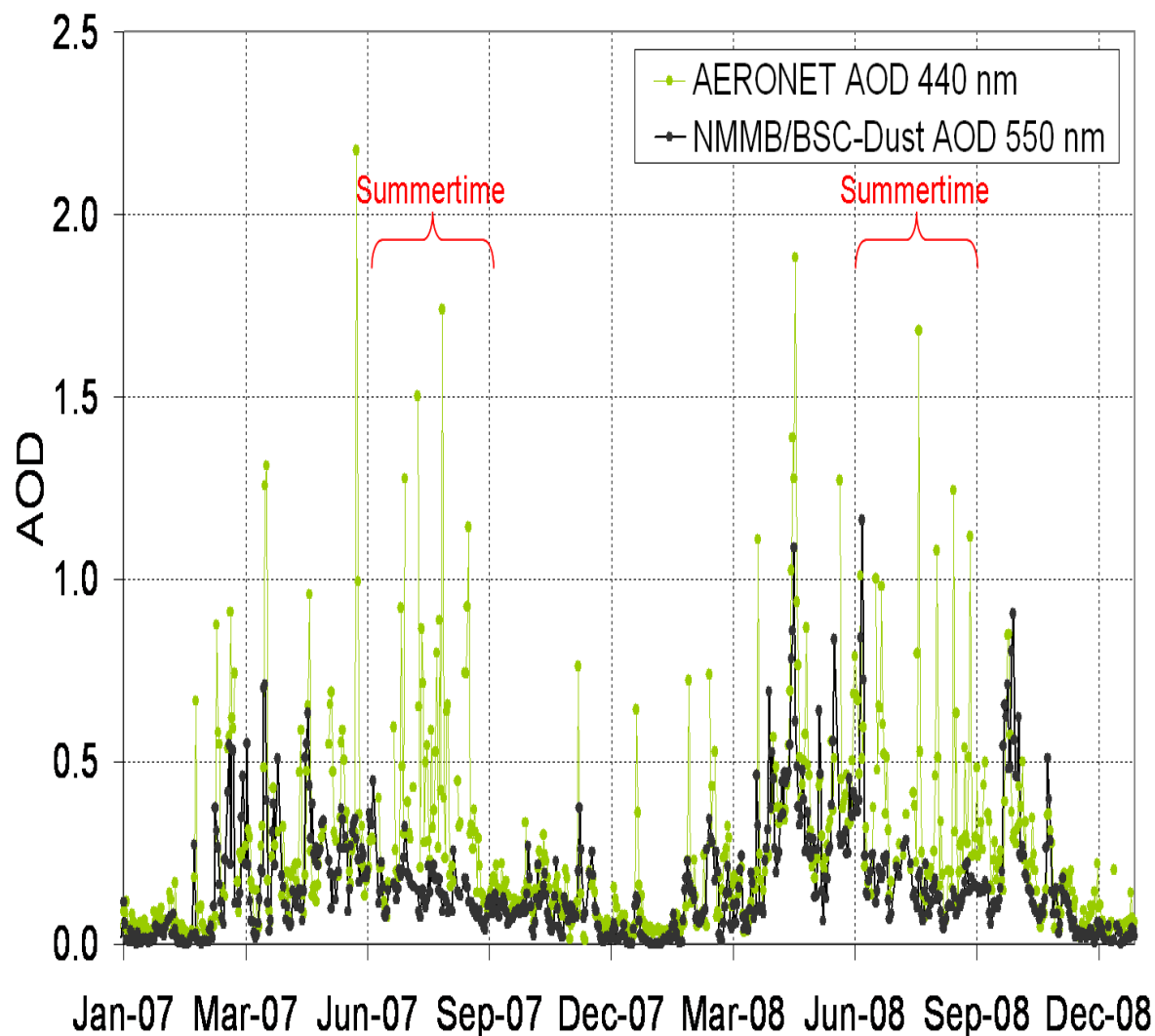
Atmospheric  
Chemistry  
and Physics  
Open Access  


## Aerosol characterization at the Saharan AERONET site Tamanrasset

C. Guirado<sup>1,2</sup>, E. Cuevas<sup>2</sup>, V. E. Cachorro<sup>1</sup>, C. Toledano<sup>1</sup>, S. Alonso-Pérez<sup>2,3,4</sup>, J. J. Bustos<sup>2</sup>, S. Basart<sup>5</sup>,  
P. M. Romero<sup>2</sup>, C. Camino<sup>2</sup>, M. Mimouni<sup>6</sup>, L. Zeudmi<sup>6</sup>, P. Goloub<sup>7</sup>, J. M. Baldasano<sup>5,8</sup>, and A. M. de Frutos<sup>1</sup>



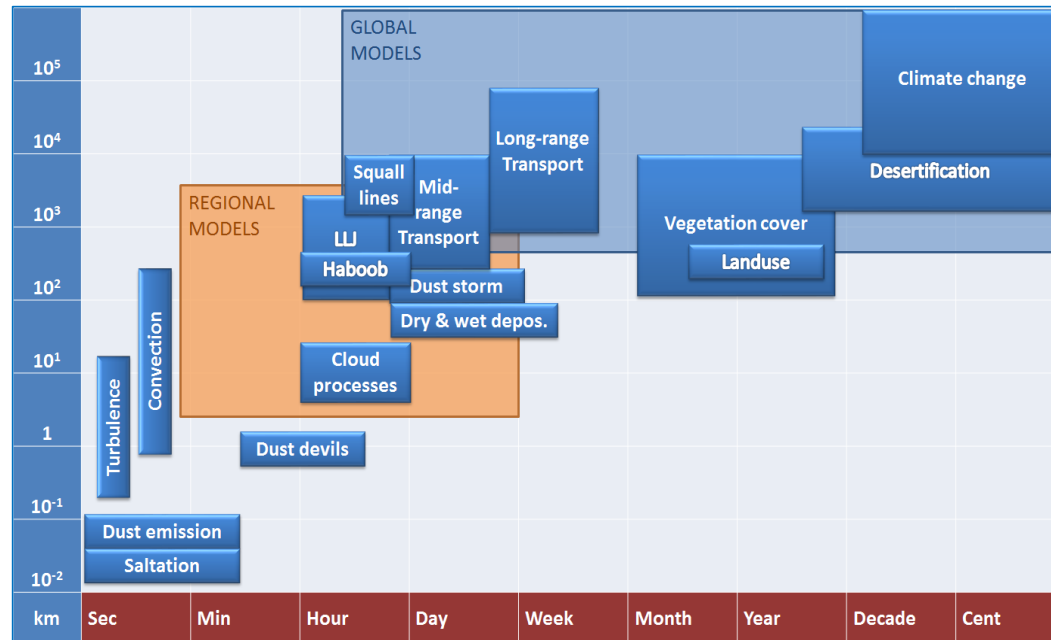
# Dust forecasting models



*Extracted from Guirado et al. (2014, ACP)*



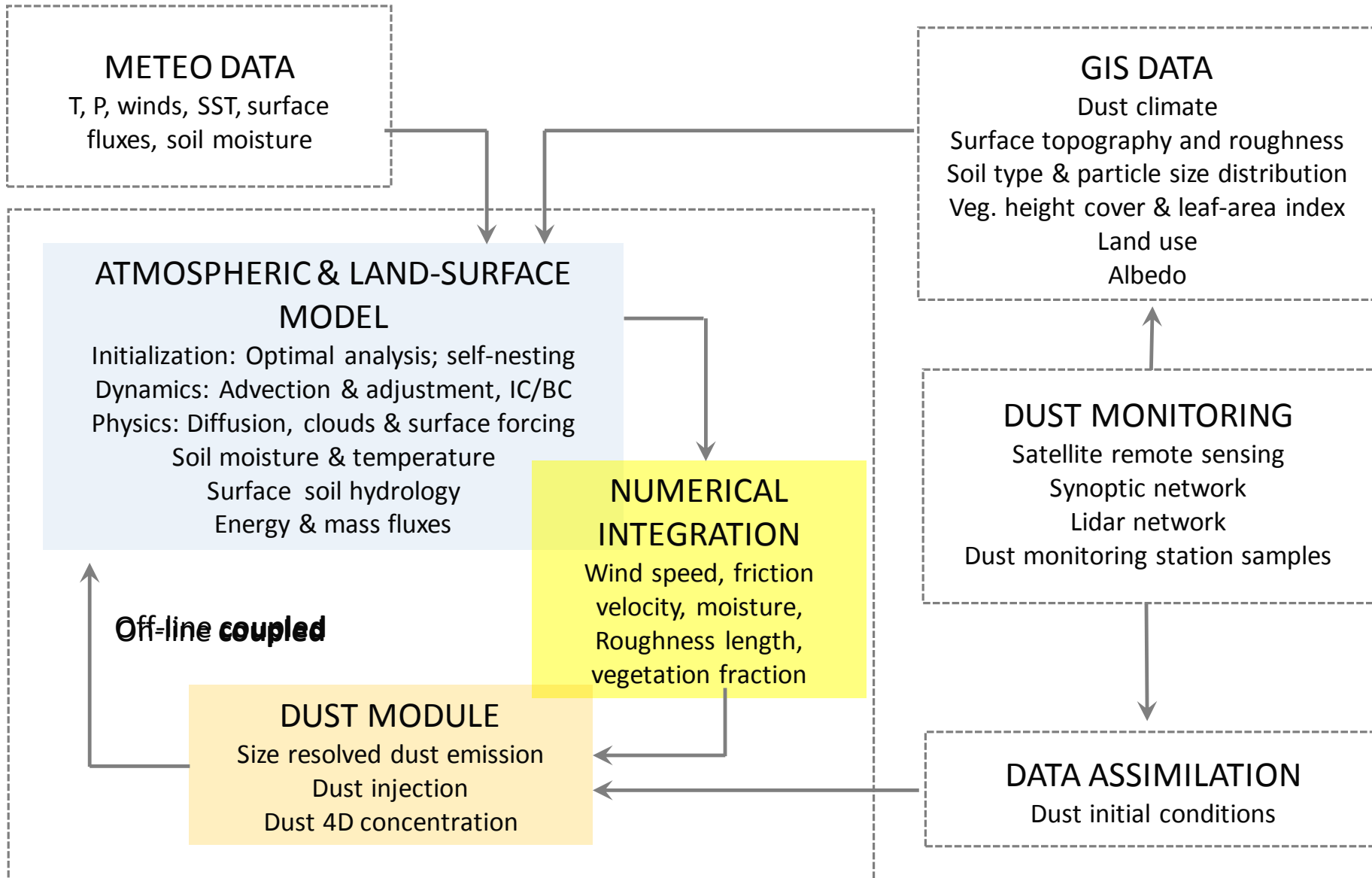
# Dust forecasting models



- Dust processes span over five orders of magnitude in space and time. **Dust transport** is a global phenomenon. However, **dust emission** is a threshold phenomenon, sporadic and spatially heterogeneous, that is locally controlled on small spatial and temporal scales.
- To correctly describe and quantify the dust cycle, one needs to understand equally well local-scale processes such as saltation and entrainment of individual dust particles as well as large-scale phenomena such as mid- and long-range transport.

**Accurate representation of dust sources and sinks is critical for providing realistic magnitudes and patterns of atmospheric dust fields.**

# Dust forecasting models



# Desert dust soil types

Main landscapes of the North Africa  
(Photos from Callot et al. 2000) :



A) Central part of Saharan Atlas. In the background, mountains, and in front, an overgrazed plain;

B) Northern part of Saharan Atlas. Esparto grass steppe degraded by a strong anthropic action. The sandy soil disappears, denuding the sandstone substratum;

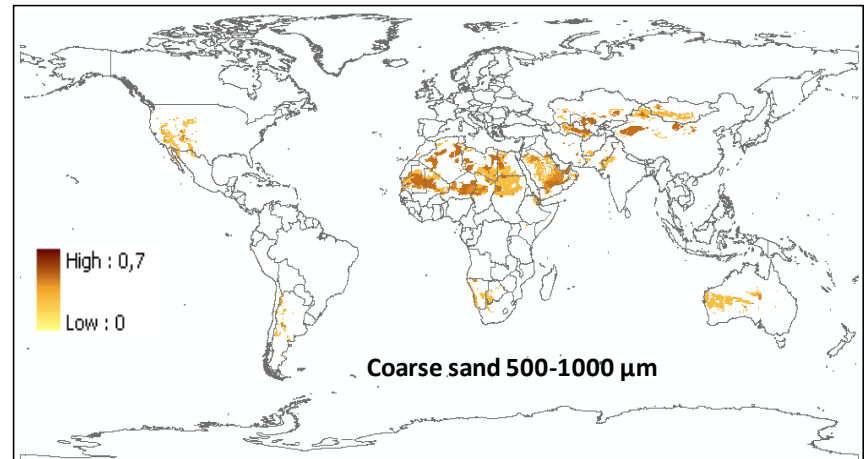
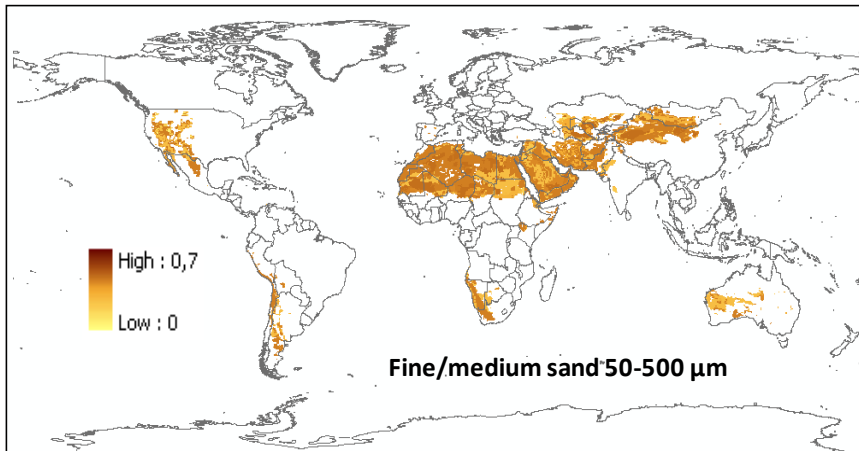
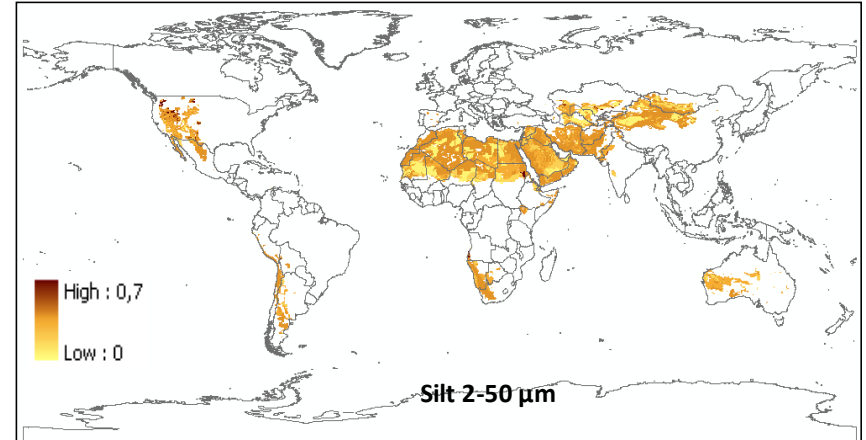
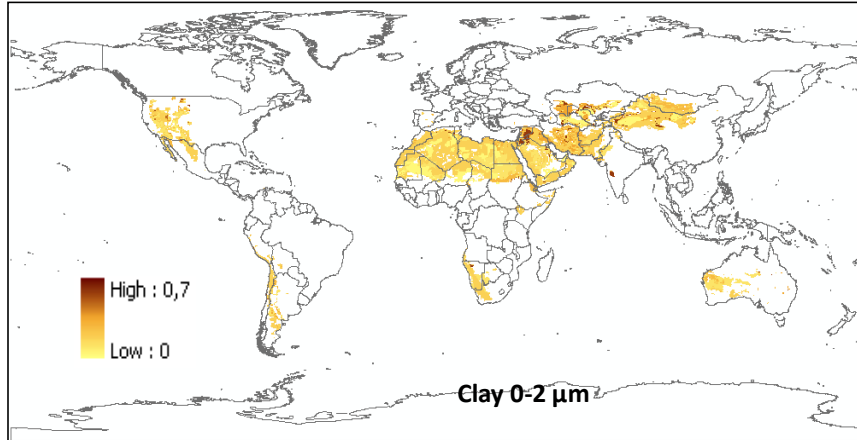
C) The Great Hamada south-west of El-Abiodh-Sidi-Cheikh;

D) Daïa in the Mechfar, at Hassi Cheikh well;

E) North-east of the Great Western Erg: coarse sand interdune corridor with deflation cauldron and palaeolake deposits;

F) North-east of the Great Western Erg: great coarse sand dome dunes, covered by fine sand active dunes.

# Soil size distribution derived from soil texture

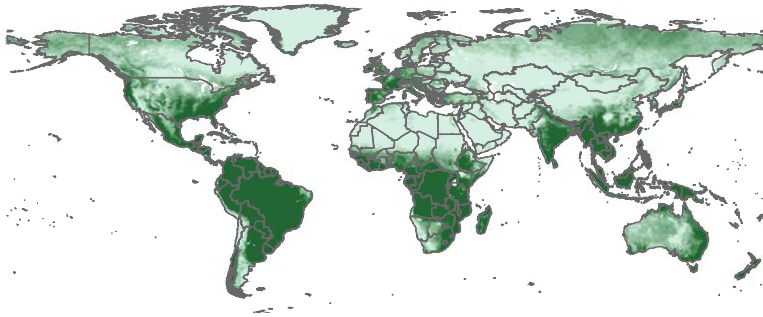


Four top soil texture classes according STASGO-FAO 1km database are converted to 4 parent soil size categories following Tegen et al. [2002].

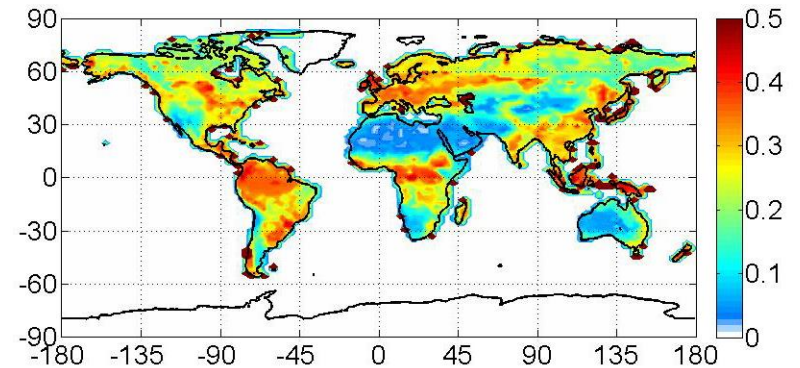


# Vegetation, roughness, soil moisture

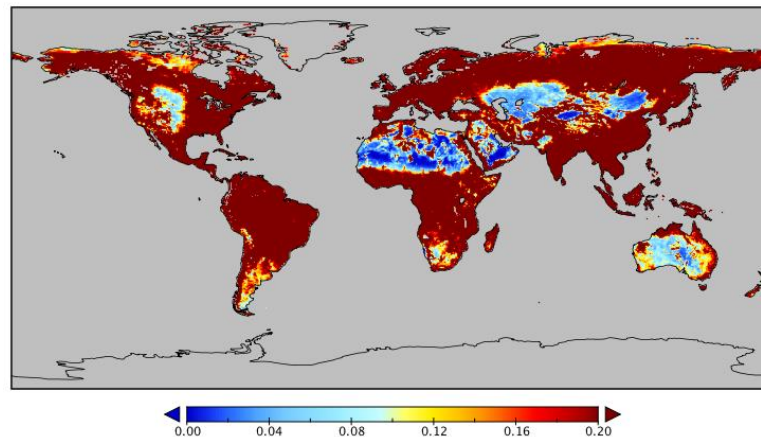
Vegetation fraction  
(MODIS)



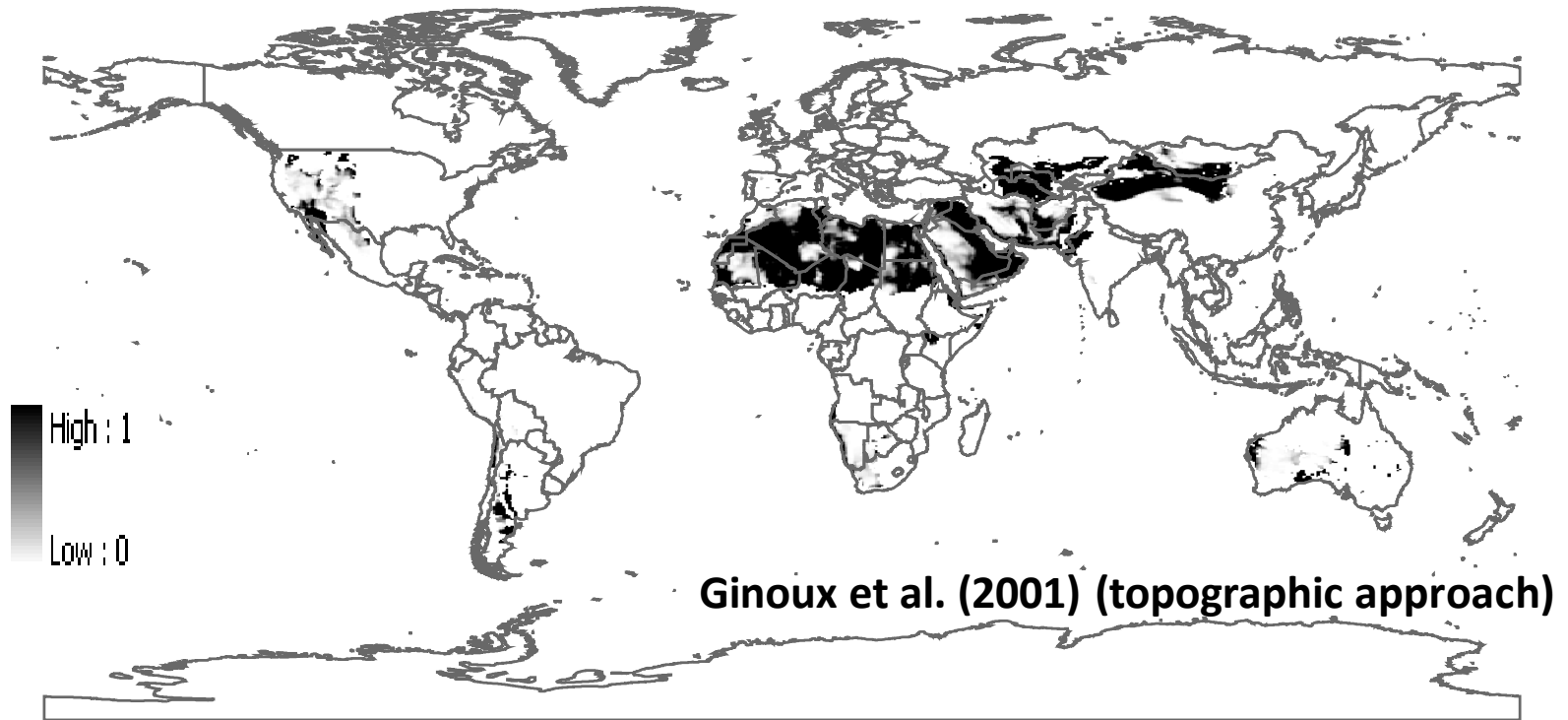
Soil moisture  
(model based)



Roughness length  
(ASCAT + PARASOL)



# Source mapping: why?

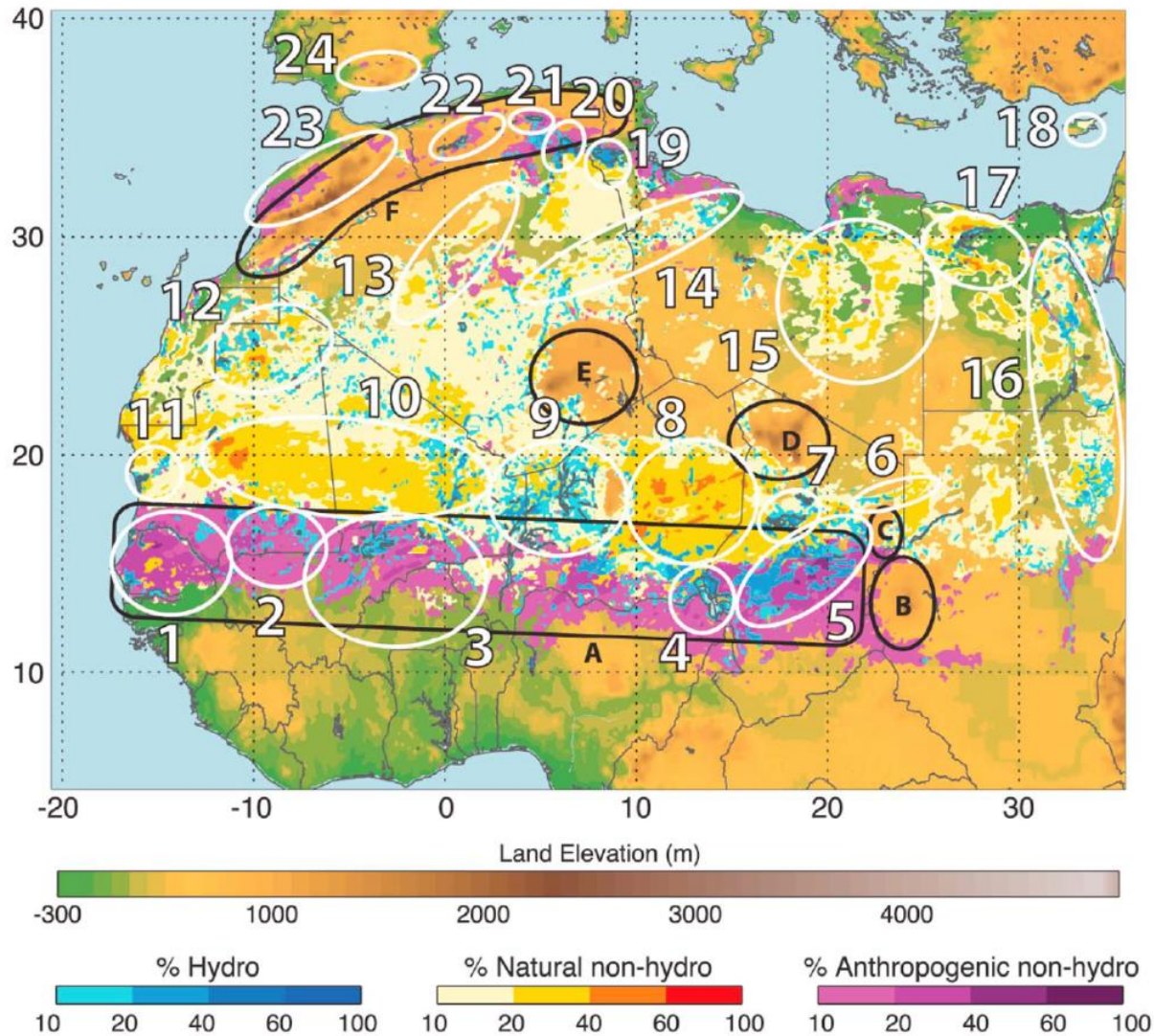


$$S = \left( \frac{z_{\max} - z_i}{z_{\max} - z_{\min}} \right)^5$$

S: probability to have accumulated sediments in the grid cell  $i$  of altitude  $z_i$

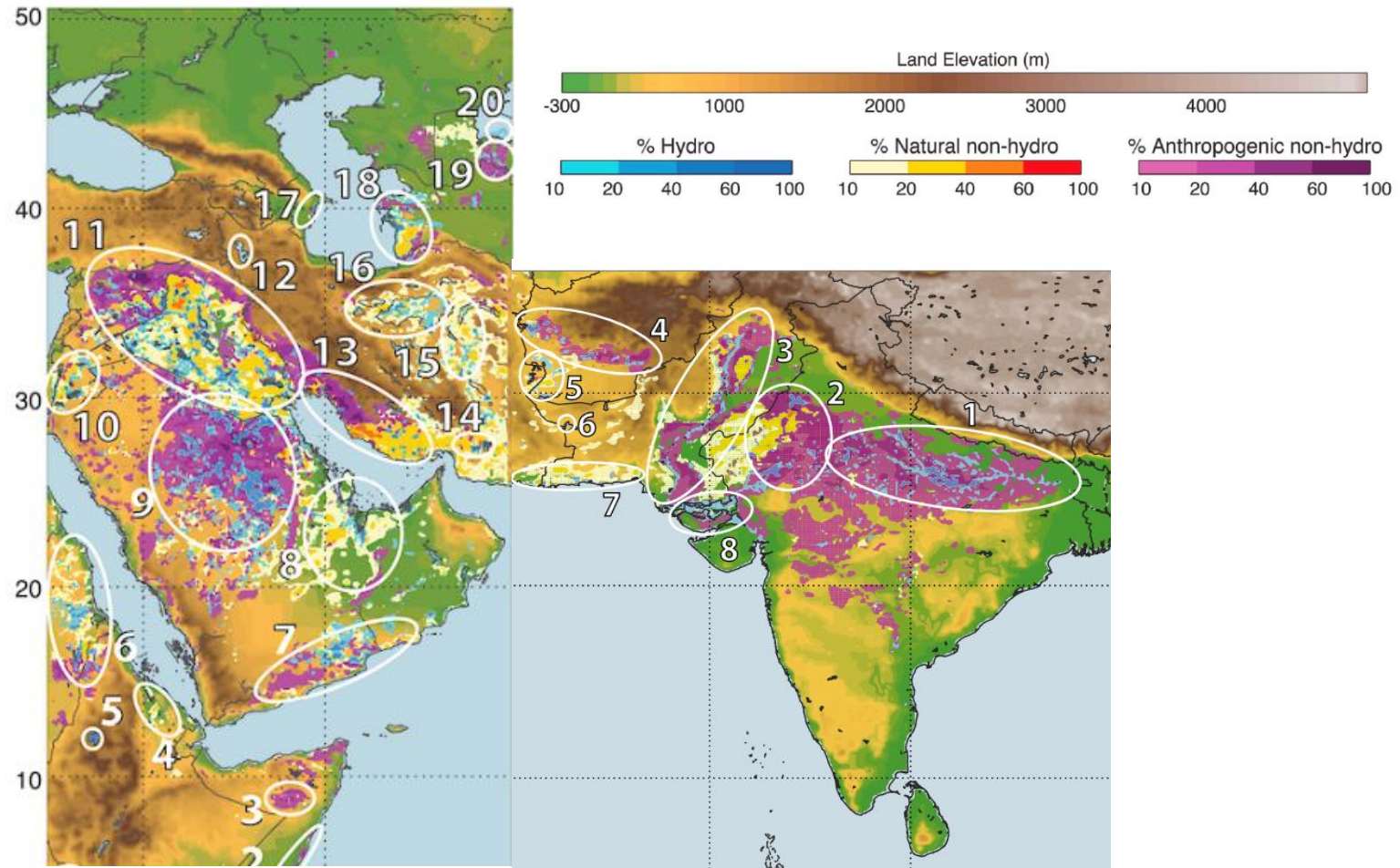
best fit with the sources identified by Prospero et al. 2000

# Natural and anthropogenic dust sources



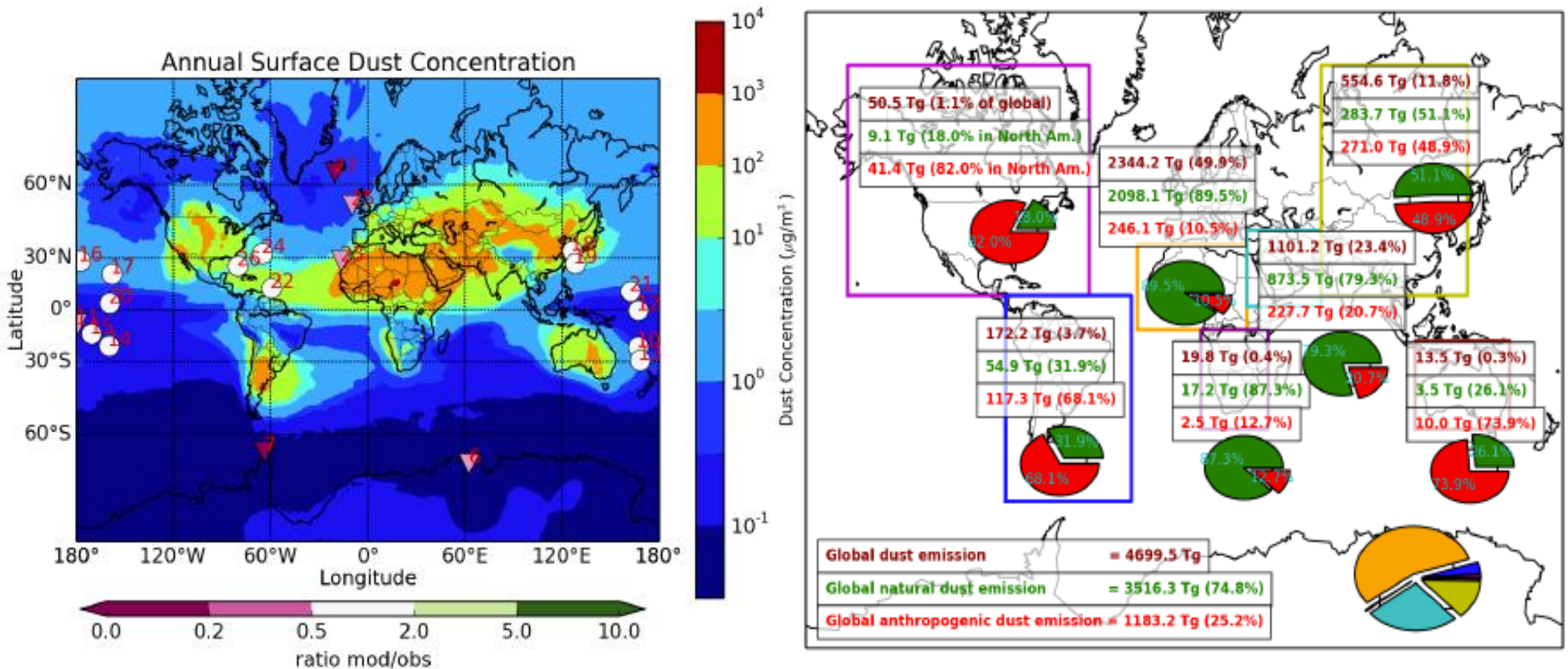


# Natural and anthropogenic dust sources





# Current quantification natural vs. anthropogenic

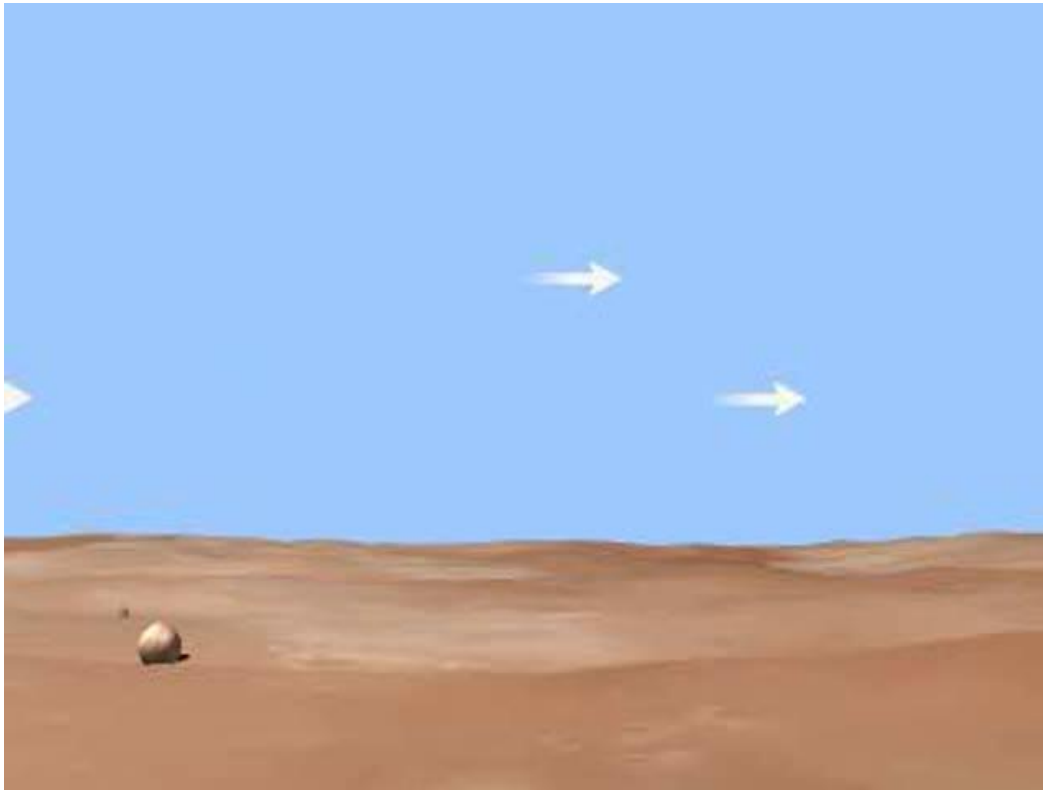


# Major challenge for modeling



# Dust emission mechanisms

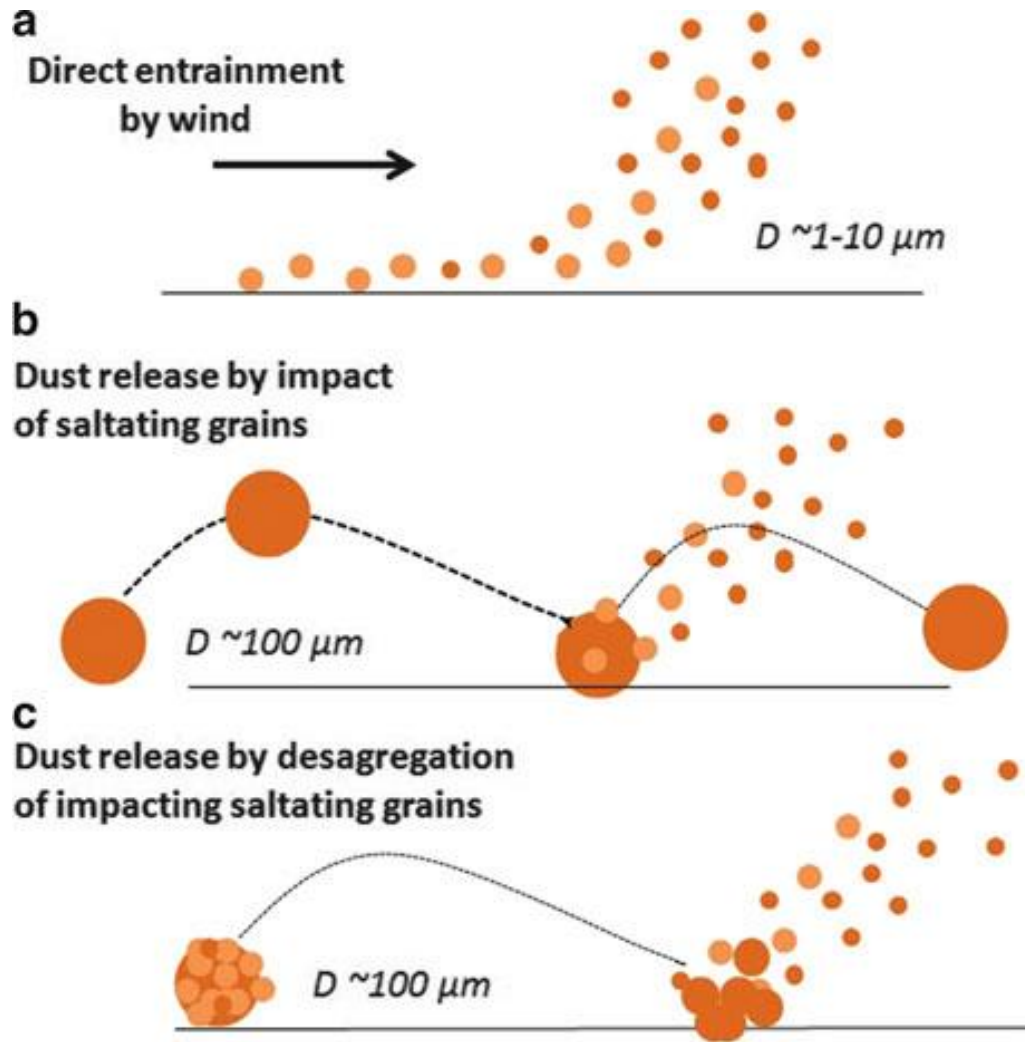
- Complex physical process involving entrainment of soil particles by the surface winds.



- Creep or rolling motion of the largest particles ( $> 500 \mu\text{m}$ )
- Saltation or horizontal motion of large soil grains (sand) ( $50\text{-}500\mu\text{m}$ )
- Suspension of dust (after sandblasting or saltation bombardment) ( $0.1\text{-}50 \mu\text{m}$ )

Movie from the COMET program at <http://meted.ucar.edu/> of the University Corporation for Atmospheric Research (UCAR)

# Dust emission mechanisms



*Emitted dust mass*

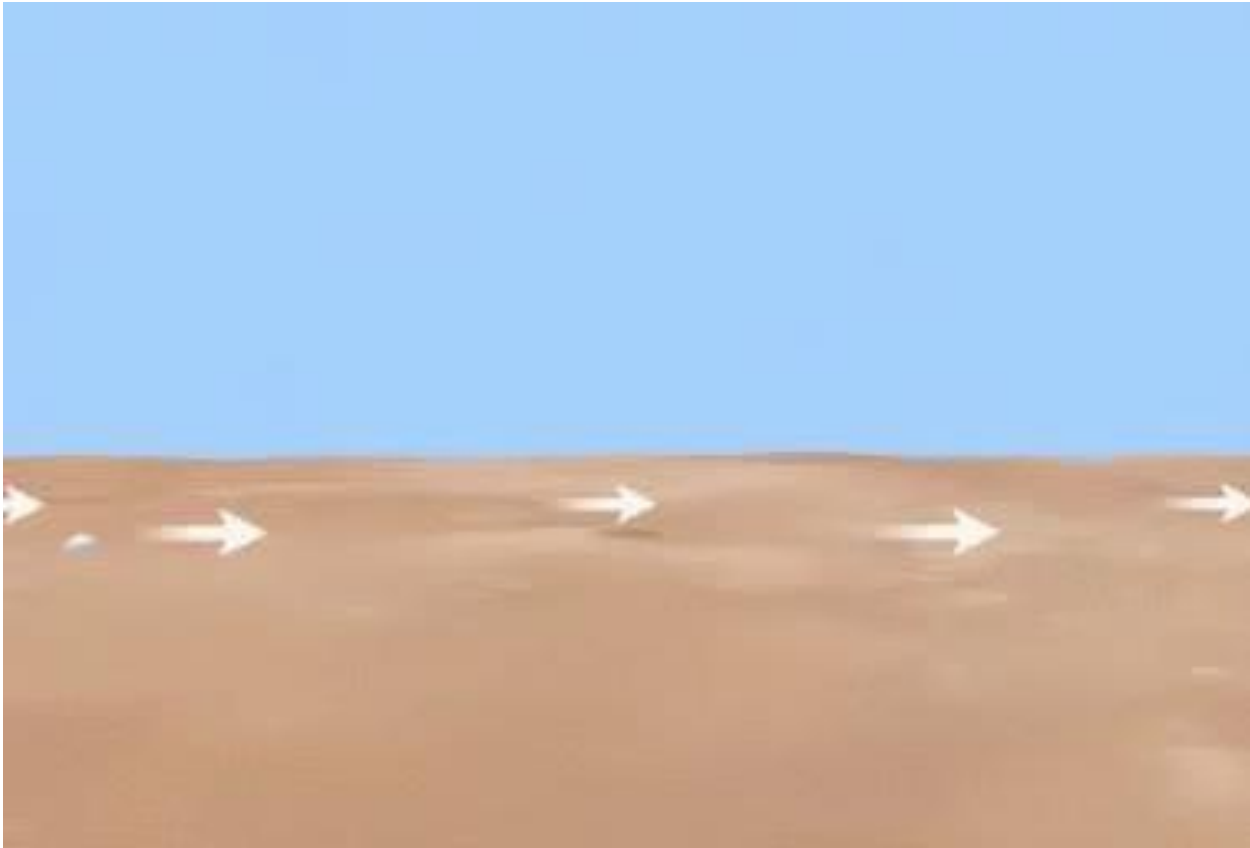
*&*

*Size distribution*



# Dust dry deposition

## Sedimentation and dry deposition



Movie from the COMET program at <http://meted.ucar.edu/> of the University Corporation for Atmospheric Research (UCAR)

# Dust wet deposition

## Wet scavenging

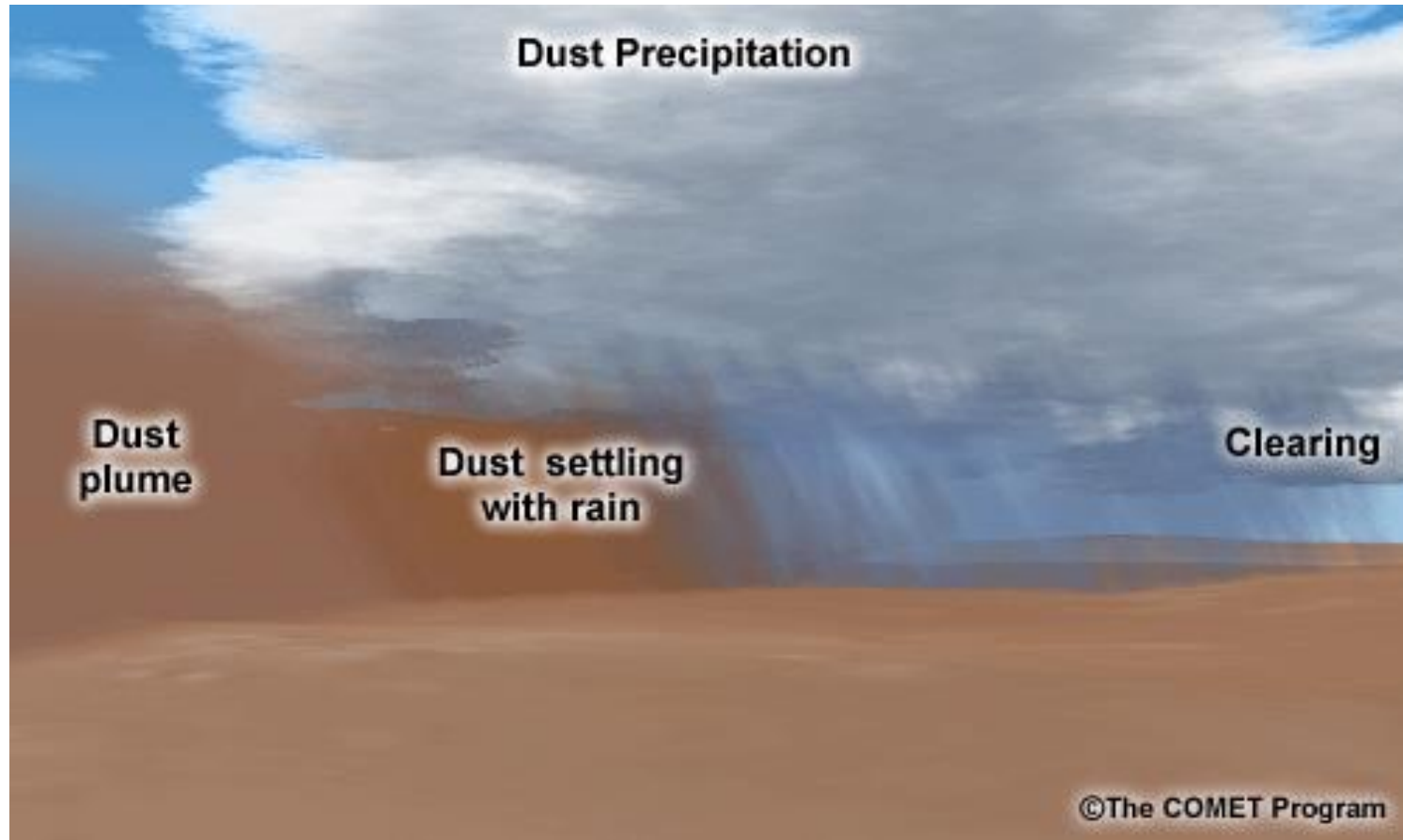
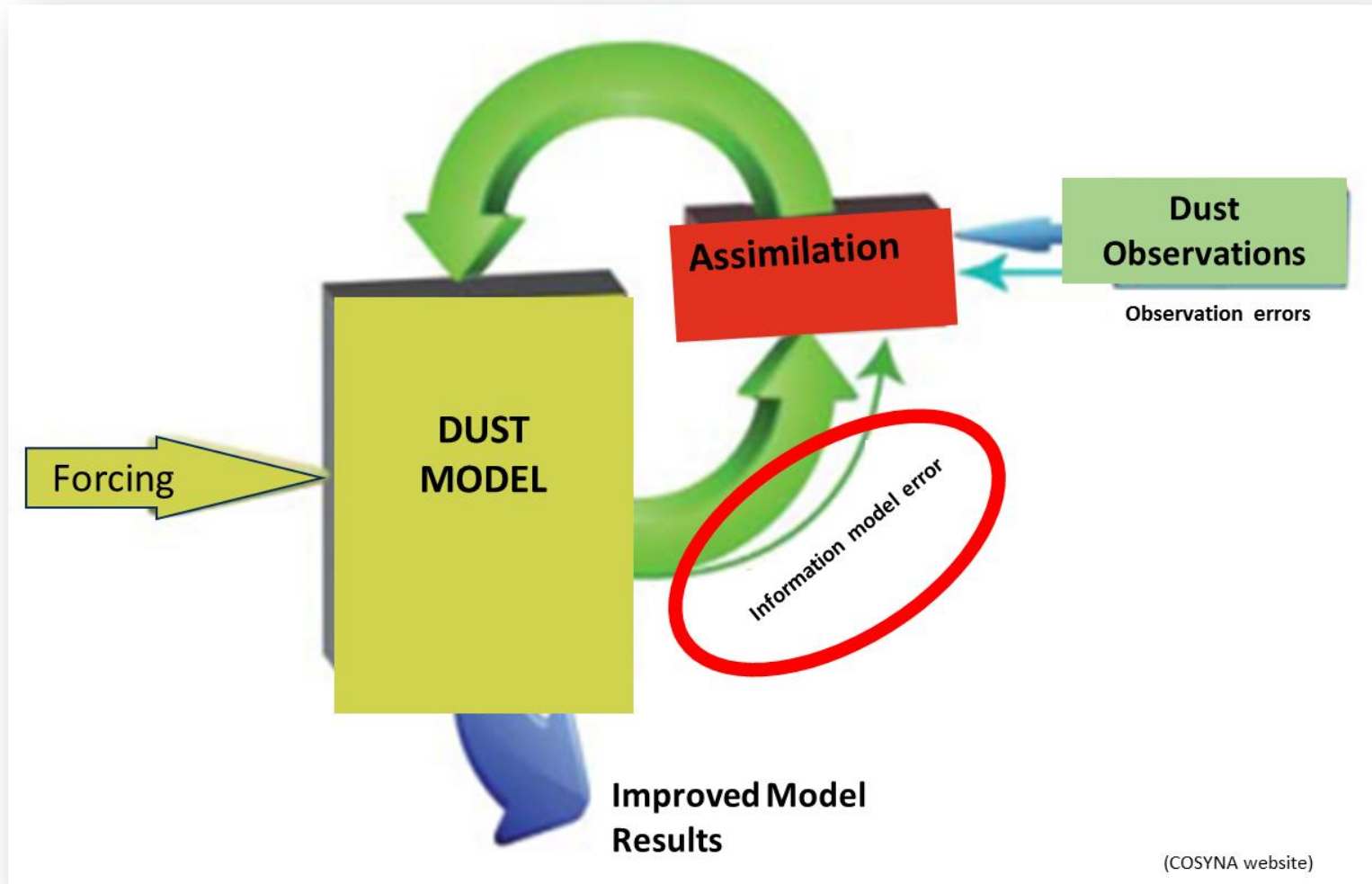


Image from the COMET program at <http://meted.ucar.edu/> of the University Corporation for Atmospheric Research (UCAR)

# Data Assimilation



Obtaining the 'best' estimate of current atmospheric dust conditions (**analysis**)  
Creating datasets describing the recent history of dust in the atmosphere (**reanalysis**)

# Dust forecasting models

## Main differences between dust models

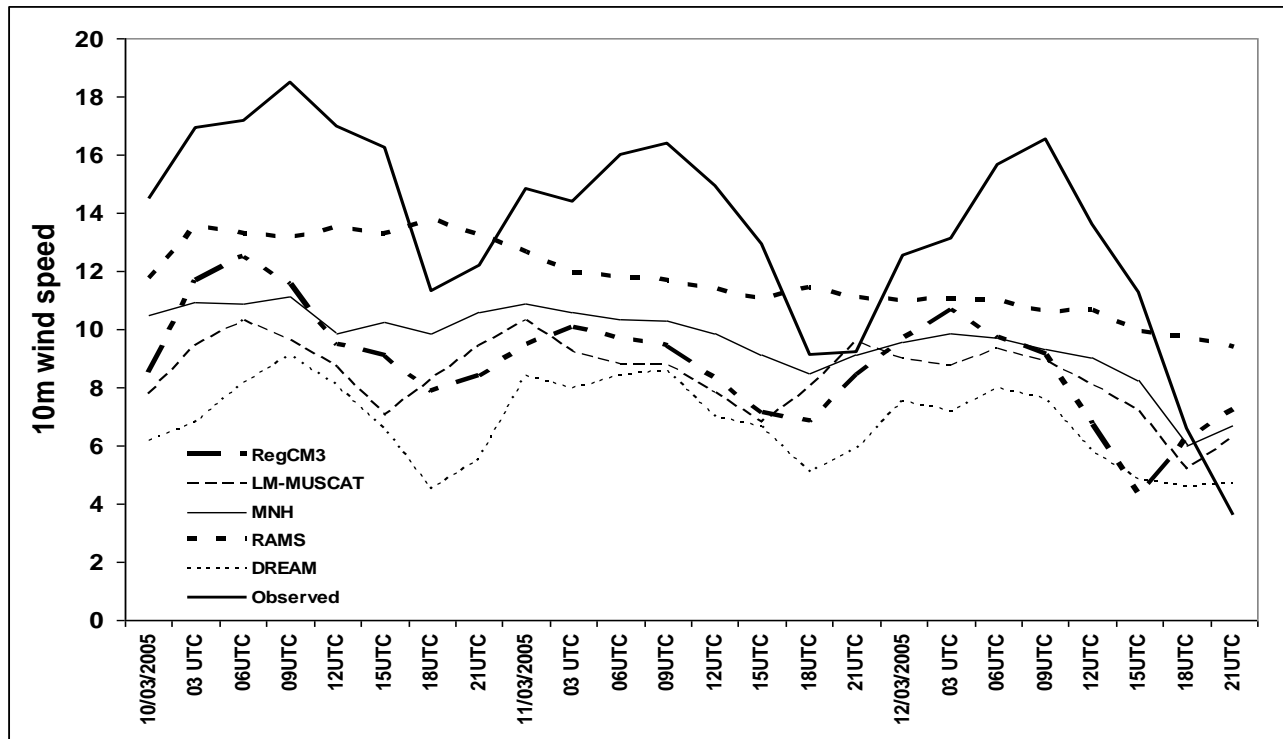
1. *Meteorological driver*
2. *Meteorological input files IBC*
3. *Emission scheme*
4. *Geographic-information database (source mask)*
5. *Land-surface scheme*
6. *Dry deposition scheme*
7. *Wet depositioon scheme*
8. *Spatio-temporal resolution*
9. *Data assimilation*
10. ....



# Dust forecasting models

Experimental campaigns: BODEX 2005 (Todd et al. 2008, JGR)

First regional model intercomparison in the Bodélé hot spot



Strong differences between models!!!! → **Meteorology** and **emission scheme**

# Modeling the dust cycle at BSC: From R&D to operational



**Barcelona  
Supercomputing  
Center**

Centro Nacional de Supercomputación

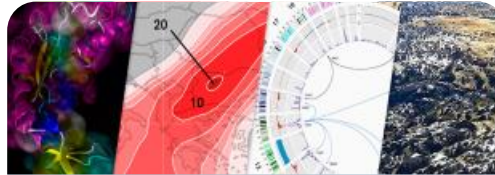
# Barcelona Supercomputing Center

## Centro Nacional de Supercomputación

### BSC objectives



Supercomputing services  
to Spanish and  
EU researchers



R&D in Computer,  
Life, Earth and  
Engineering Sciences



PhD programme,  
technology transfer,  
public engagement

BSC is  
a consortium  
that includes

Spanish Government

60%



Catalonian Government

30%



Univ. Politècnica de Catalunya (UPC)

10%





# The MareNostrum 4 supercomputer

Total peak performance:

**13,7 Pflops/s**



80%



Access: [prace-ri.eu/hpc\\_acces](http://prace-ri.eu/hpc_acces)

16%



RED ESPAÑOLA DE  
SUPERCOMPUTACIÓN

Access: [bsc.es/res-intranet](http://bsc.es/res-intranet)

4%



Barcelona  
Supercomputing  
Center  
Centro Nacional de Supercomputación



# Mission of BSC Scientific Departments



## Computer Sciences

To influence the way machines are built, programmed and used: programming models, performance tools, Big Data, computer architecture, energy efficiency



## Earth Sciences

To develop and implement global and regional state-of-the-art models for short-term air quality forecast and long-term climate applications



## Life Sciences

To understand living organisms by means of theoretical and computational methods (molecular modeling, genomics, proteomics)

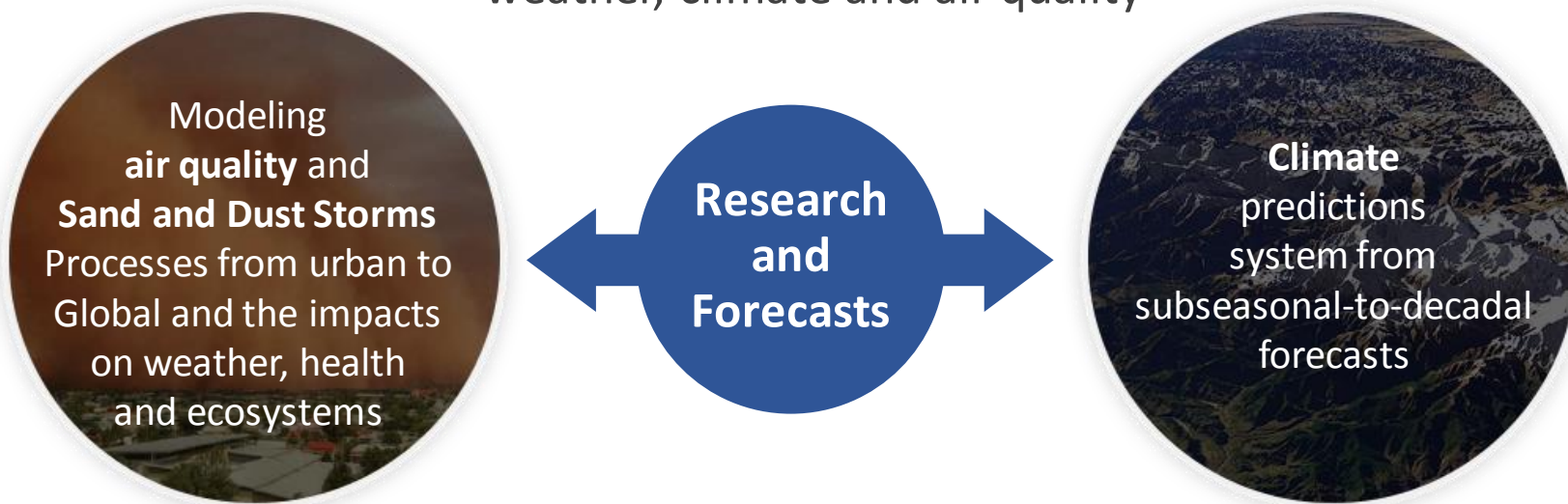


## CASE

To develop scientific and engineering software to efficiently exploit super-computing capabilities (biomedical, geophysics, atmospheric, energy, social and economic simulations)

# Earth Sciences Department

Environmental modelling and forecasting, with a particular focus on weather, climate and air quality



AXA  
Research Fund

## Service Users Sectors



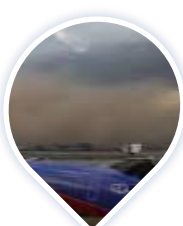
Infrastructures



Solar  
Energy



Urban  
development



Transport



Wind  
Energy



Agriculture



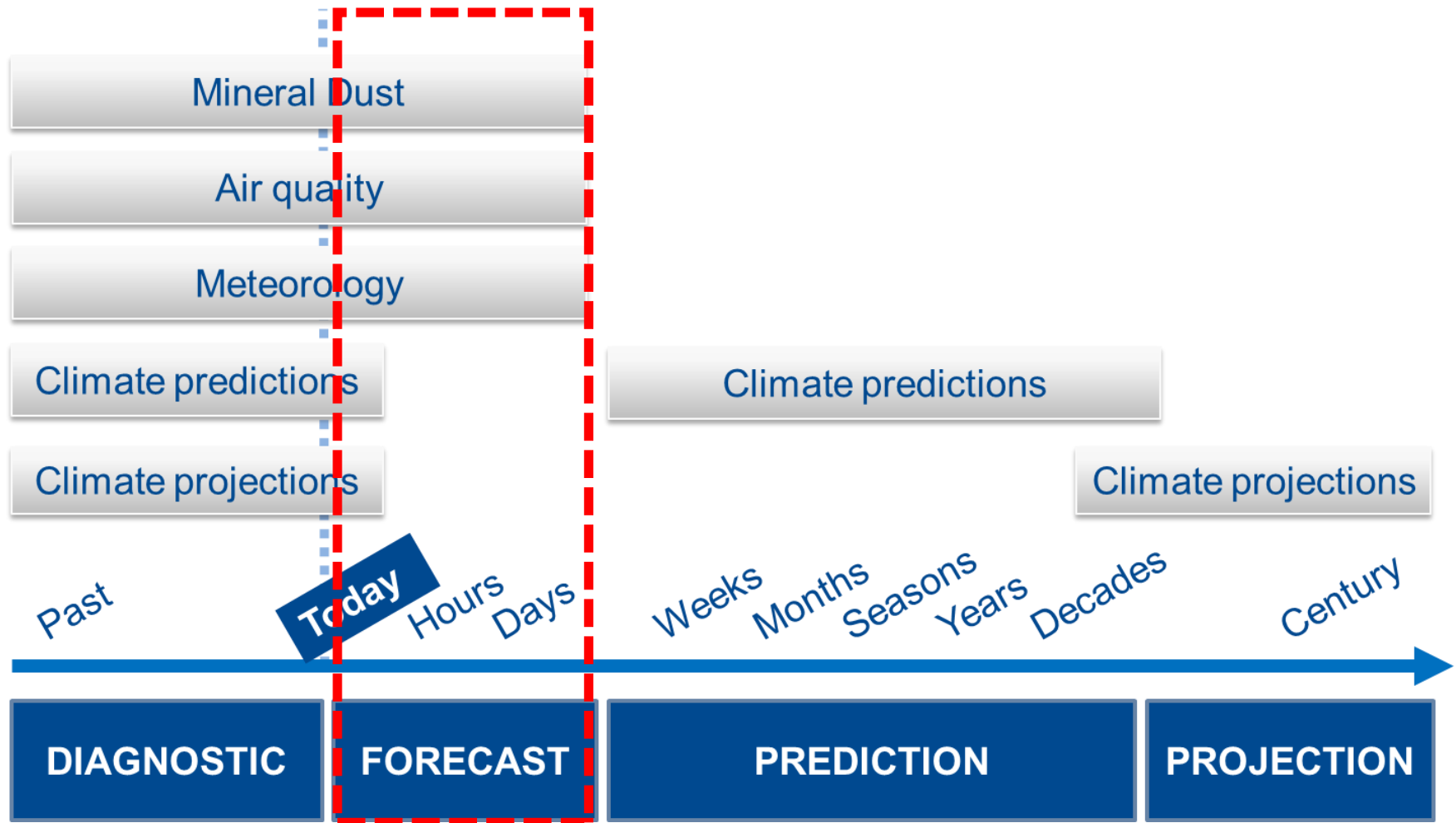
Insurance



Barcelona  
Supercomputing  
Center  
Centro Nacional de Supercomputación

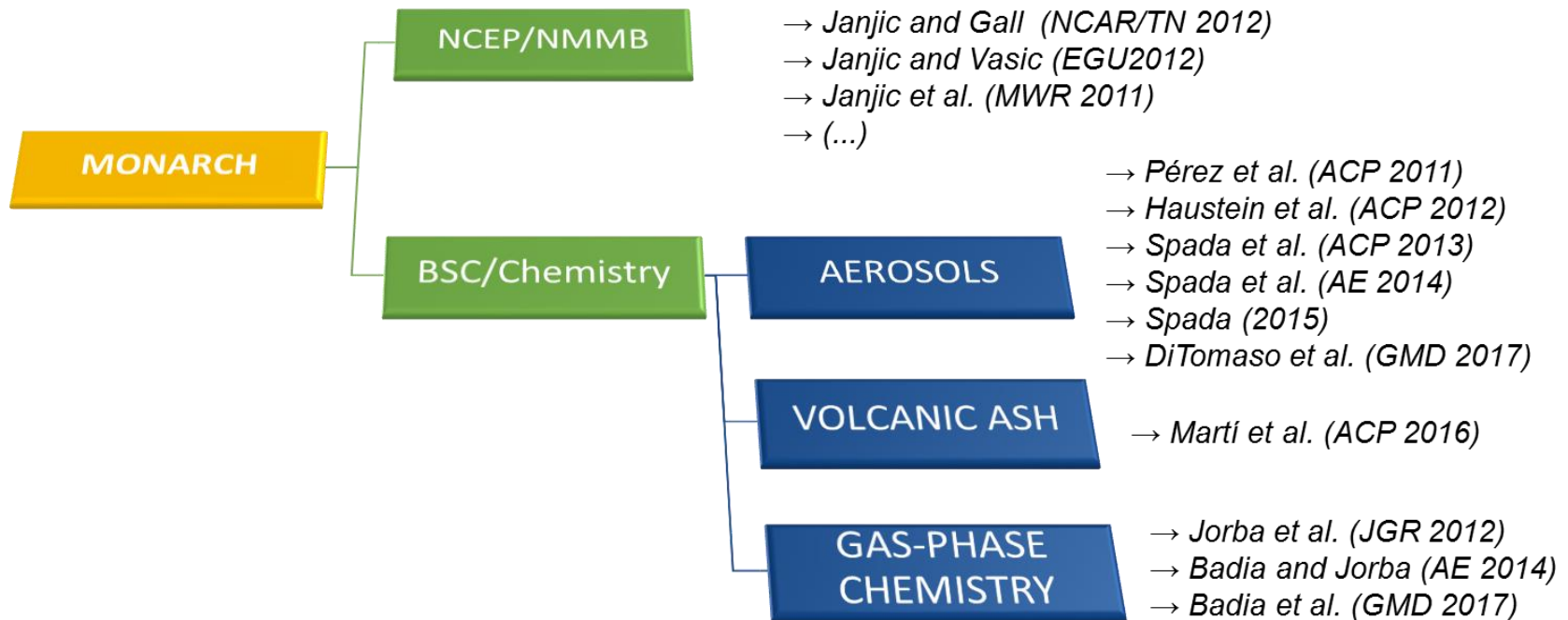
# BSC Earth Sciences Department

## Enviromental modelling and forecasting



# The MONARCH model

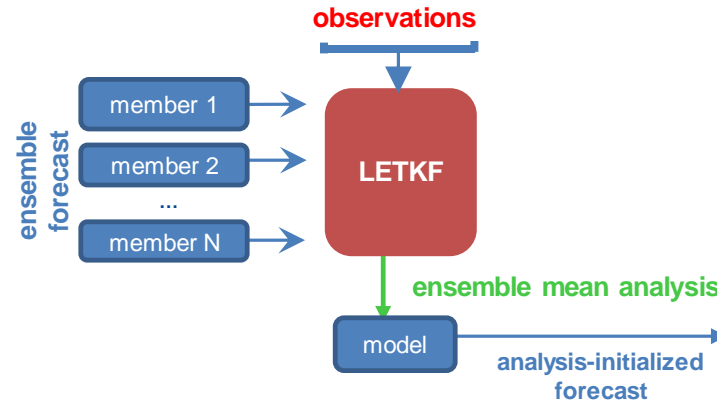
- **Multiscale**: global to regional (up to 1km) scales allowed
- Fully **on-line** coupling: weather-chemistry feedback processes allowed
- Enhancement with a **data assimilation** system





# MONARCH - Dust Data Assimilation

**MONARCH** coupled with a Local Ensemble Transform Kalman Filter (**LETKF**) for the assimilation of aerosol optical depth observations

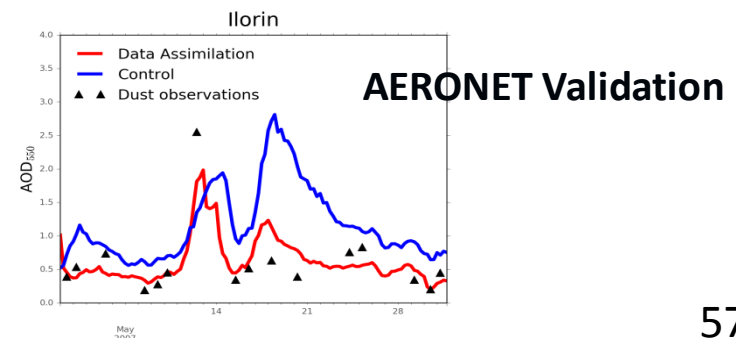
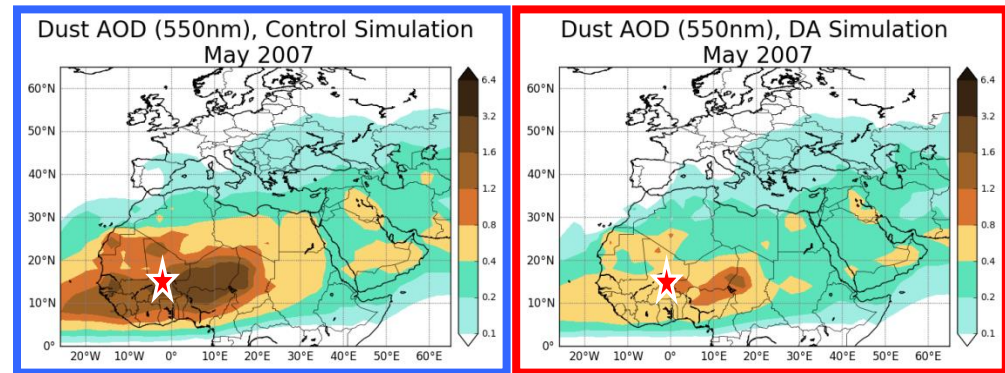


## Mineral dust application

The ensemble forecast is based on uncertainties in the dust emission scheme

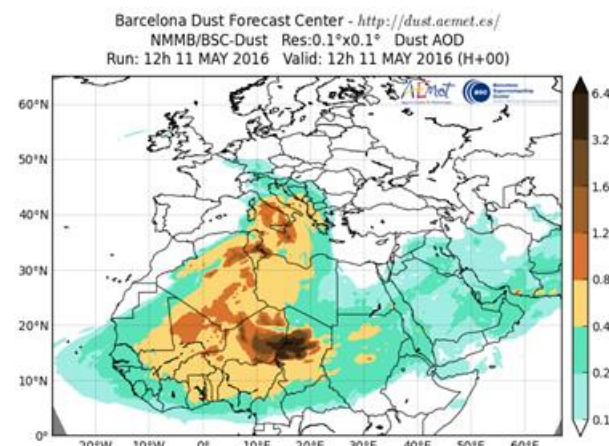
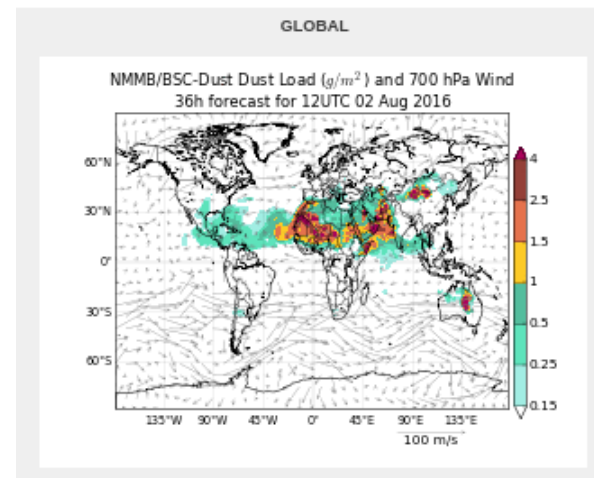
- vertical flux,
- size distribution at emission
- threshold on friction velocity

*(Di Tomaso et al., GMD, 2017)*



# WMO Dust Centers in Barcelona

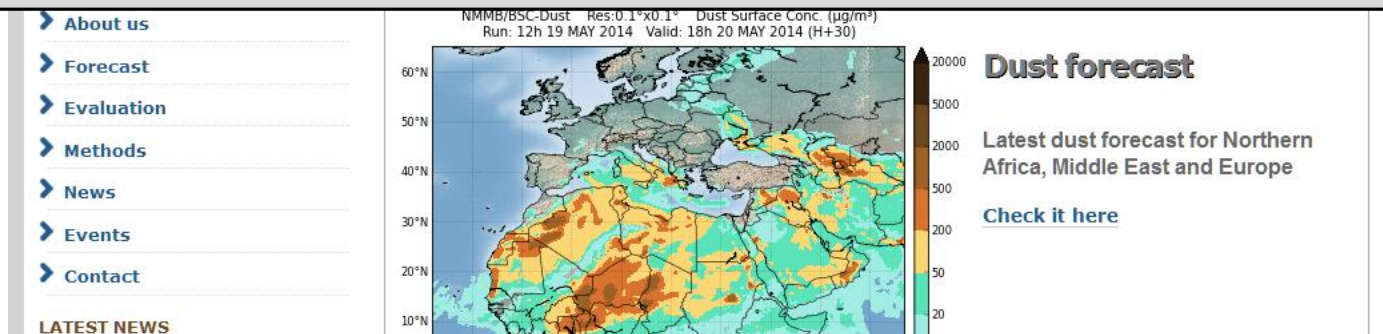
- **BSC dust operational forecast** (global and regional domains)
  - Contribution to the **SDS-WAS** (regional) and **ICAP** (global) multi-model ensembles
- **WMO Dust Regional Centers**
  - **Barcelona Dust Forecast Center.** First specialized WMO Center for mineral dust prediction. Started in 2014 - **Operational**
    - <http://dust.aemet.es>
    - @Dust\_Barcelona
  - **SDS-WAS.** North Africa, Middle East and Europe Regional Center. Started in 2010 – **Research**
    - <http://sds-was.aemet.es>



# Barcelona Dust Forecasting Center



***In 2014, the First Specialized Center for Mineral Dust Prediction of WMO is created***  
***NMMB/BSC-Dust selected to provide operational forecasts for NAMEE region***



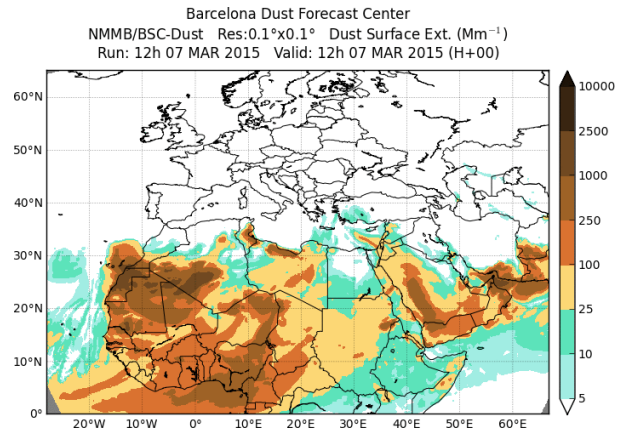
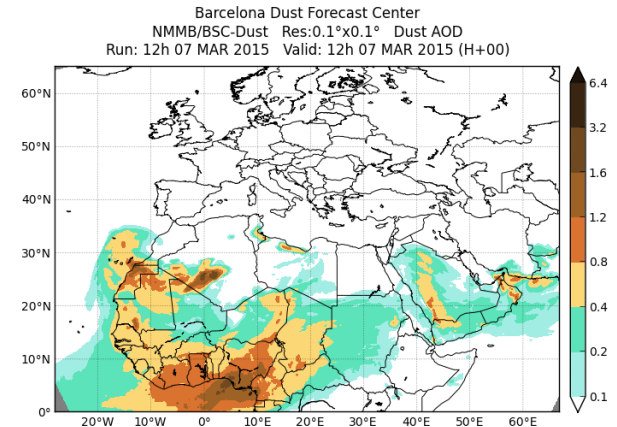
# Barcelona Dust Forecasting Center

- **Operational products:**

- Dust Optical Depth at 550nm
- Dust Dry Deposition
- Dust Load
- Dust Surface Concentration
- Dust Surface Extinction at 550nm
- Dust Wet Deposition

 **@Dust\_Barcelona**

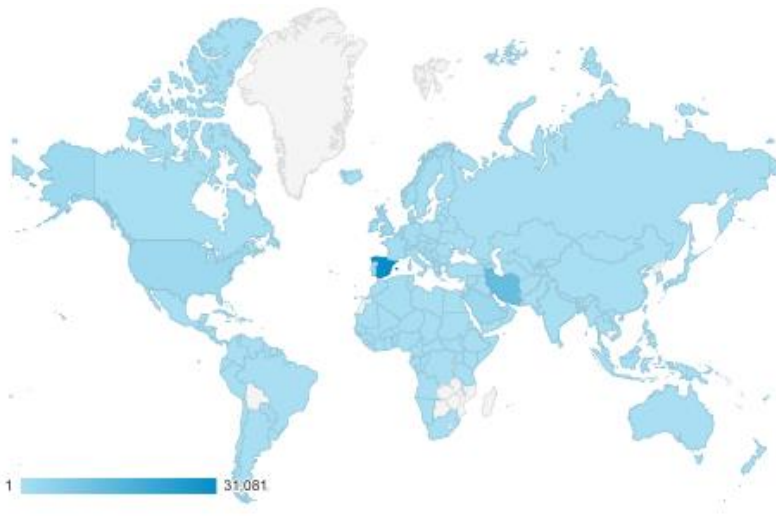
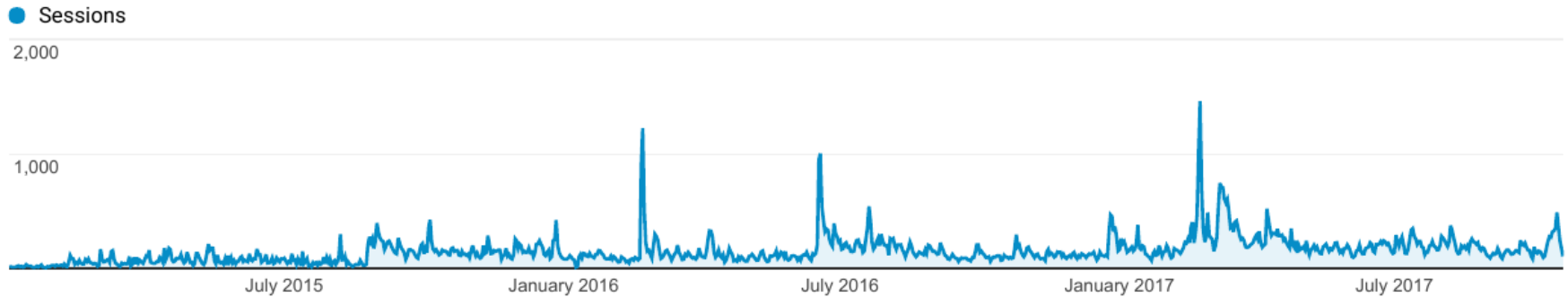
**<http://dust.aemet.es/>**





# Barcelona Dust Forecasting Center

Website visits (<http://dust.aemet.es/>): 1 January 2015 – 20 October 2017

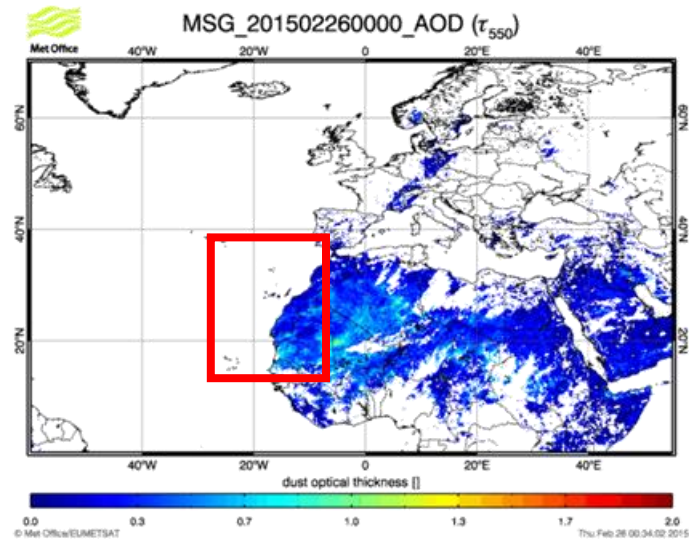
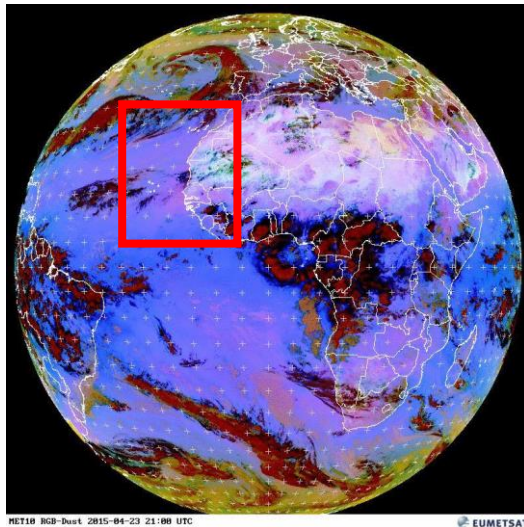
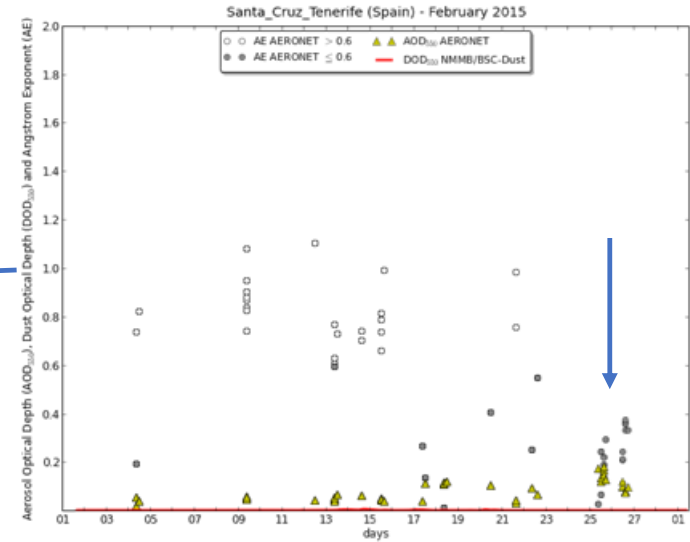
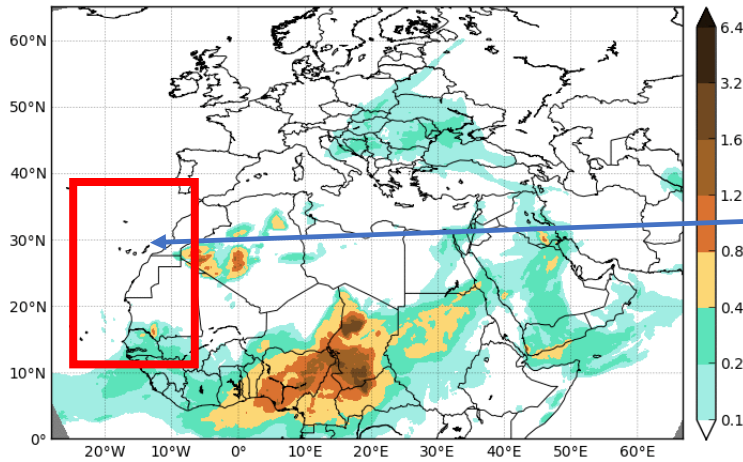


 **@Dust\_Barcelona**



# BDFC: Dust event Canary Islands Feb 2015

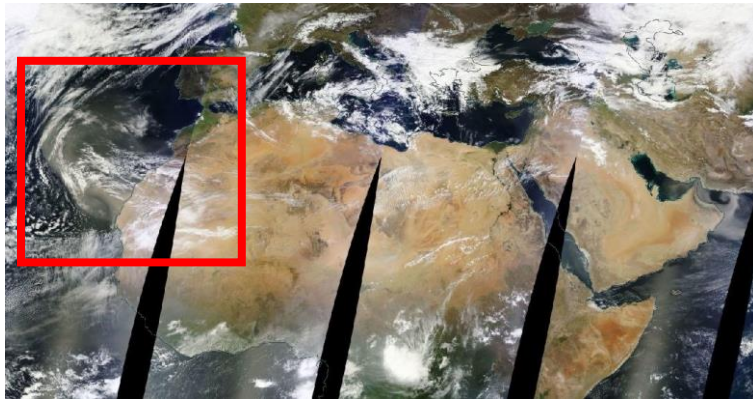
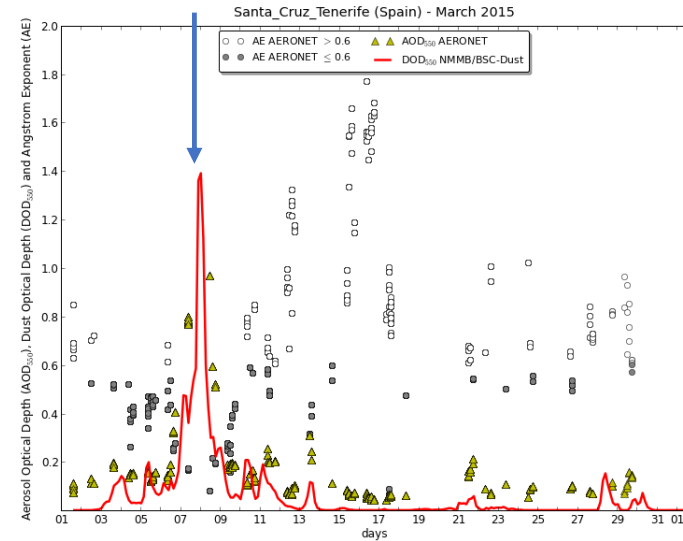
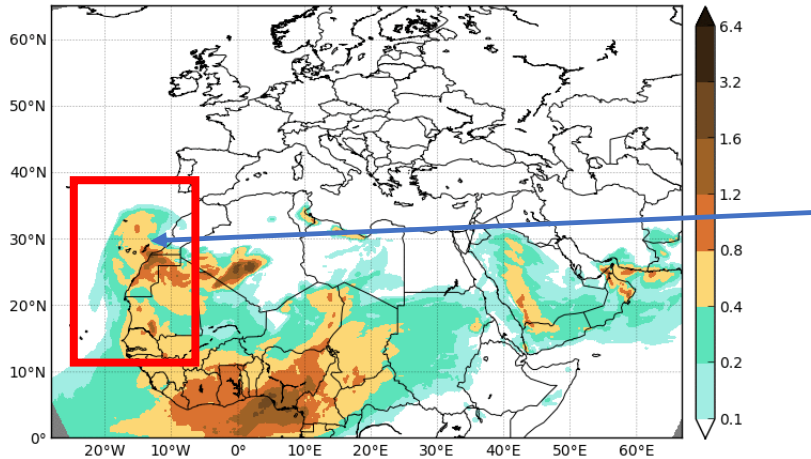
Barcelona Dust Forecast Center  
NMMB/BSC-Dust Res:0.1°x0.1° Dust AOD  
Run: 12h 25 FEB 2015 Valid: 12h 25 FEB 2015 (H+00)



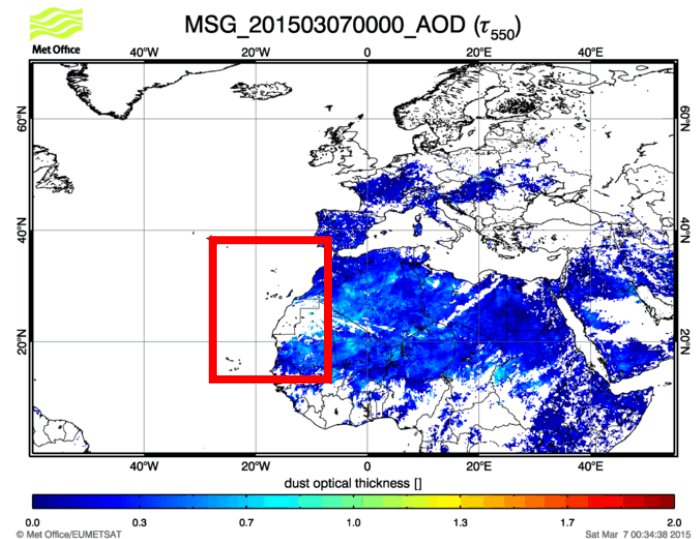
<http://dust.aemet.es/>

# BDFC: Dust event Canary Islands Mar 2015

Barcelona Dust Forecast Center  
NMMB/BSC-Dust Res:0.1°x0.1° Dust AOD  
Run: 12h 07 MAR 2015 Valid: 12h 07 MAR 2015 (H+00)



MODIS composite 8<sup>th</sup> March 2015  
from EOSDIS World Viewer

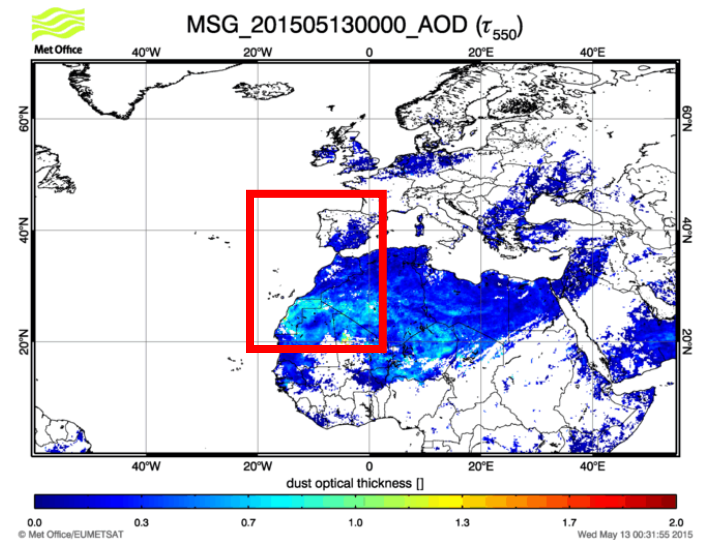
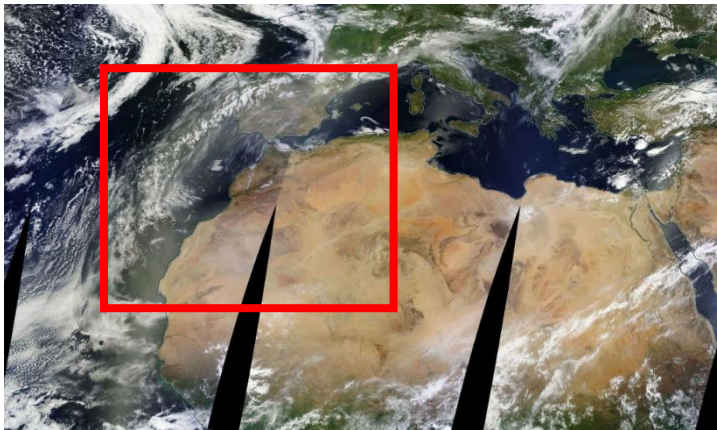
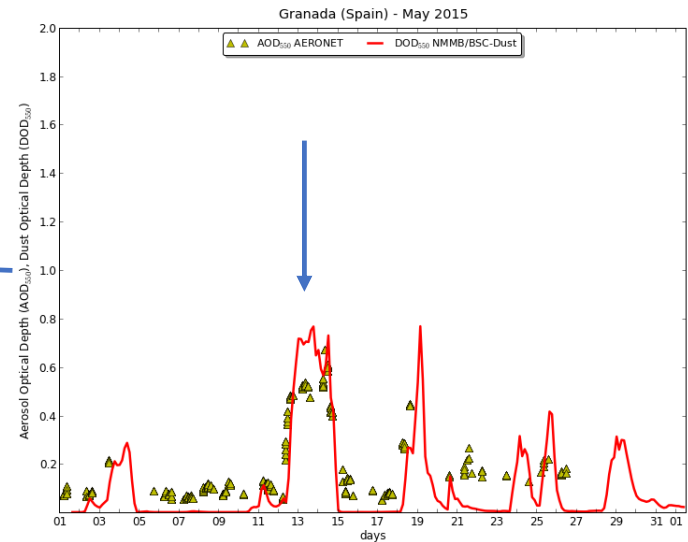
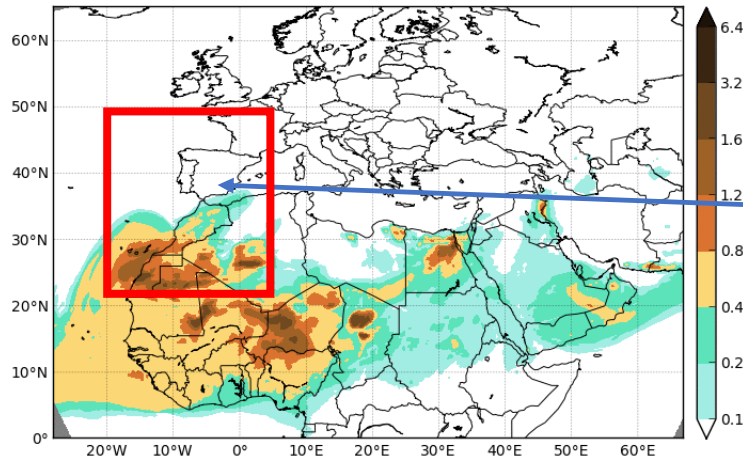


<http://dust.aemet.es/>



# BDFC: Dust event Europe May 2015

Barcelona Dust Forecast Center  
NMMB/BSC-Dust Res:0.1°x0.1° Dust AOD  
Run: 12h 11 MAY 2015 Valid: 12h 11 MAY 2015 (H+00)

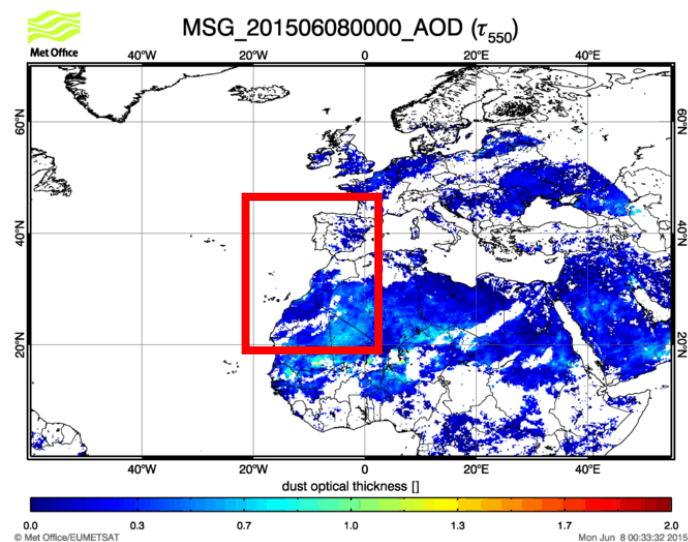
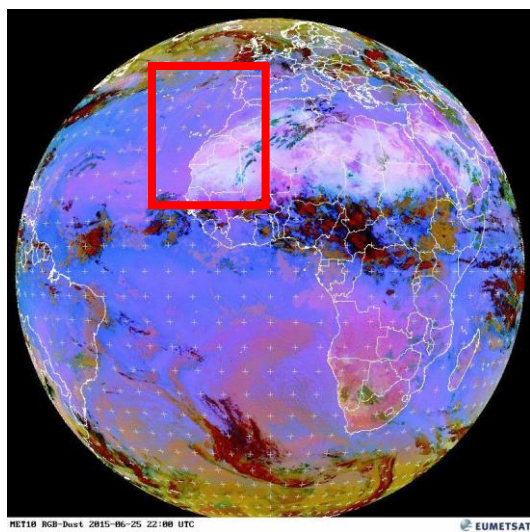
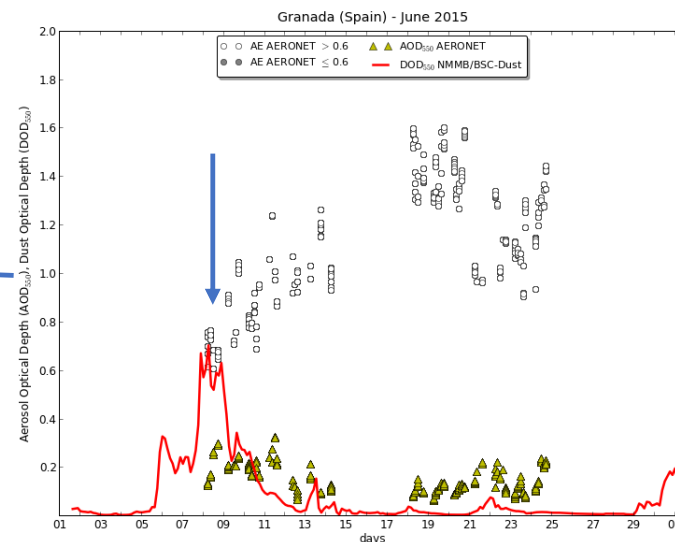
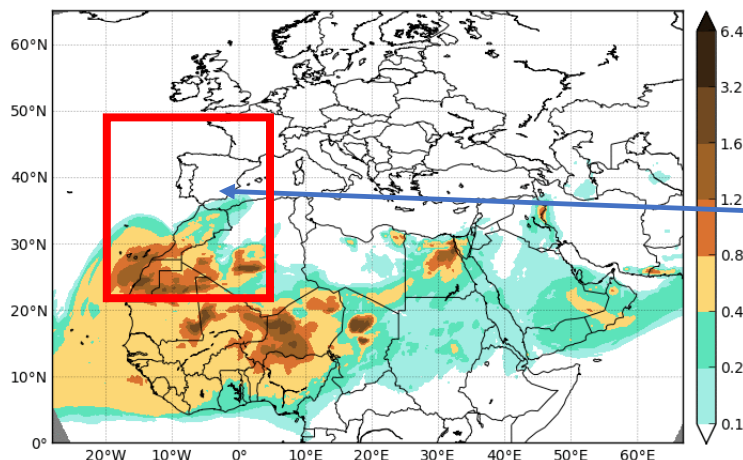


<http://dust.aemet.es/>



# BDFC: Dust event Europe June 2015

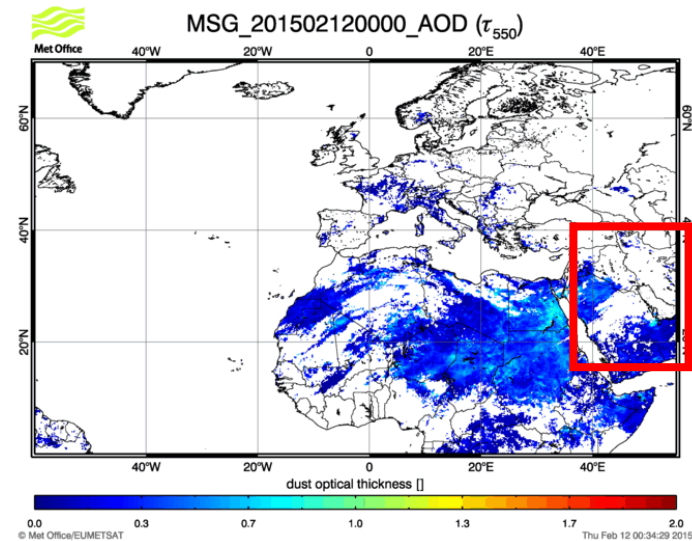
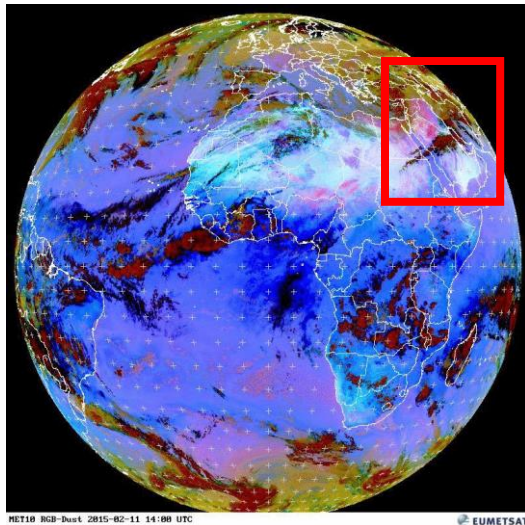
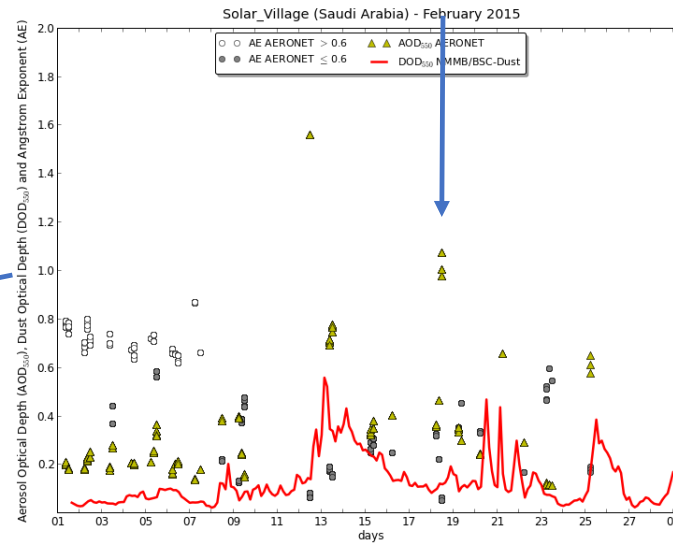
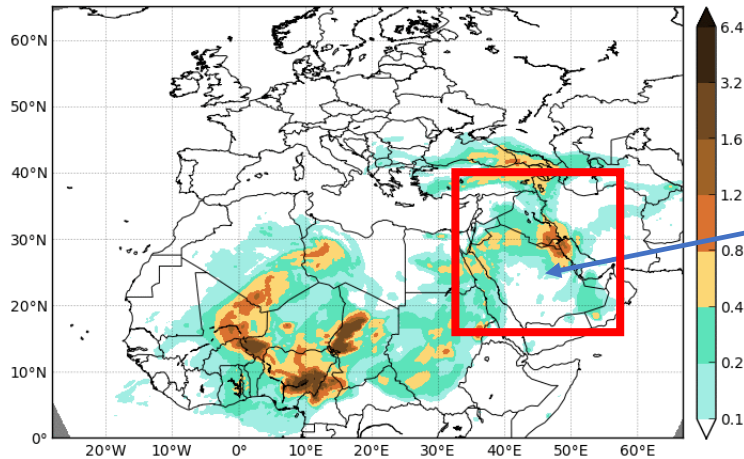
Barcelona Dust Forecast Center  
NMMB/BSC-Dust Res:0.1°x0.1° Dust AOD  
Run: 12h 11 MAY 2015 Valid: 12h 11 MAY 2015 (H+00)



<http://dust.aemet.es/>

# BDFC: Dust event Middle East Feb 2015

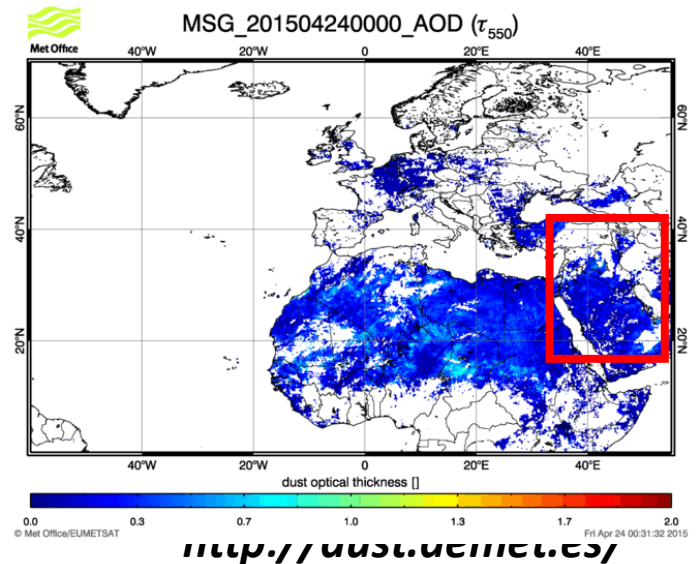
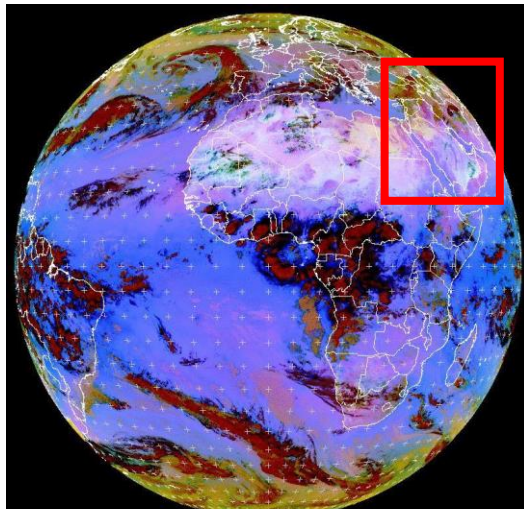
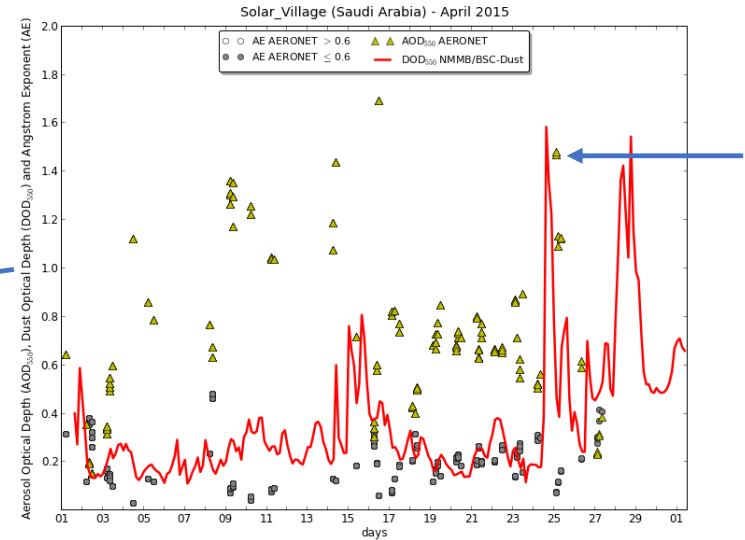
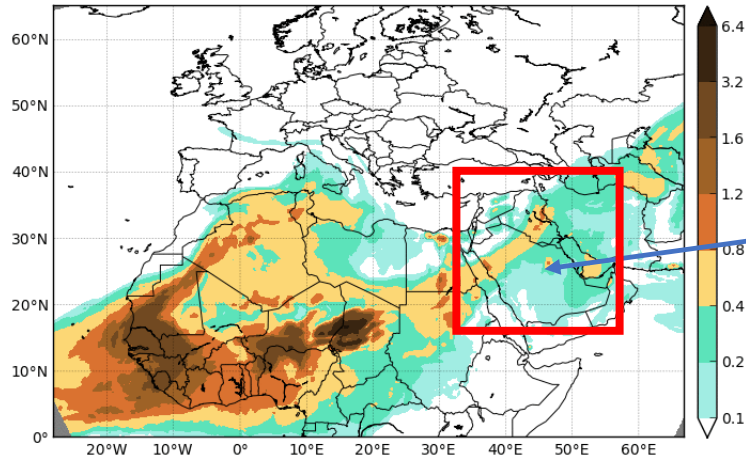
Barcelona Dust Forecast Center  
NMMB/BSC-Dust Res:0.1°x0.1° Dust AOD  
Run: 12h 12 FEB 2015 Valid: 12h 12 FEB 2015 (H+00)



<http://dust.aemet.es/>

# BDFC: Dust event Middle East Apr 2015

Barcelona Dust Forecast Center  
 NMMB/BSC-Dust Res:0.1°x0.1° Dust AOD  
 Run: 12h 23 APR 2015 Valid: 12h 23 APR 2015 (H+00)











# Barcelona Dust Forecasting Center

Log in

**BARCELONA DUST FORECAST CENTER**



Barcelona  
Supercomputing  
Center  
Centro Nacional de Supercomputación



HOME

ABOUT US

FORECAST

EVALUATION

METHODS

NEWS

EVENTS

CONTACT

**NEWSLETTER**

Keep up to date with our activities!

**SEARCH**

**HOME**

> About us

> Forecast

> Evaluation

> Methods

> News

> Events


> Contact

**LATEST NEWS**

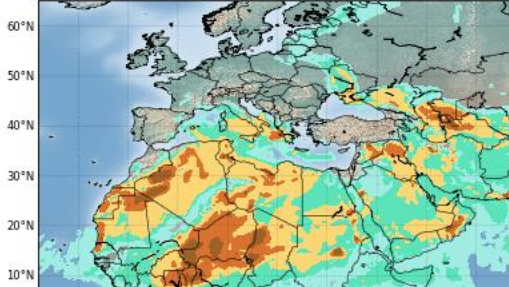
## Barcelona Dust Forecast Center starts operations

The Center will release operational dust forecasts for Northern Africa, Middle East and Europe

[Read More](#)



Barcelona Dust Forecast Center  
NMMB/BSC-Dust Res: 0.1°x0.1° Dust Surface Conc. (µg/m³)  
Run: 12h 19 MAY 2014 Valid: 18h 20 MAY 2014 (H+30)



**Dust forecast**

Latest dust forecast for Northern Africa, Middle East and Europe

[Check it here](#)





**Barcelona  
Supercomputing  
Center**

Centro Nacional de Supercomputación



**EXCELENCIA  
SEVERO  
OCHOA**

# Thank you

*Acknowledge to Carlos Pérez García-Pando, Emilio Cuevas, Slodoban Nickovic, Francesco Benincasa, Enza DiTomaso, Oriol Jorba, Kim Serradell, Enric Terradellas as well as AERONET, MODIS, U.K. Met Office MSG, MSG Eumetsat and EOSDIS World Viewer principal investigators and scientists for establishing and maintaining data used in the present contribution. Also special thank to all researchers, data providers and collaborators of the WMO SDS-WAS NA-ME-E Regional Node.*

*The source of some of the movies and information in this presentation is the COMET® Website at <http://meted.ucar.edu/> of the University Corporation for Atmospheric Research (UCAR), sponsored in part through cooperative agreement(s) with the National Oceanic and Atmospheric Administration (NOAA), U.S. Department of Commerce (DOC) © 2007-2011 University Corporation for Atmospheric Research. All Rights Reserved.*

**sara.basart@bsc.es**